

# Adaptors Fitting Instructions

## Copper, Imperial, Universal & Lead

### About:

PLASSON have one of the widest ranges of pipe fittings in the world with sizes ranging from 16mm to 900mm, pressure ratings 0 bar to 25 bar, accepting nearly all existing pipe ranges, metric and imperial including polyethylene, lead, copper and galvanised. PLASSON have a 50 year in the ground track record for its products. We pride ourselves not only on the quality of our fittings but also on our high standard of service, delivery and aftersales support.

### Product Range:

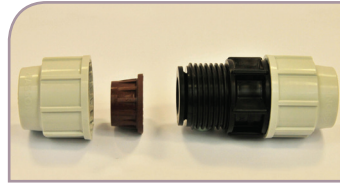
- mechanical
- pushfit
- electrofusion
- valves
- metering
- repair clamps
- threaded
- tools/accessories
- specialist ef tooling

### Contact Us:

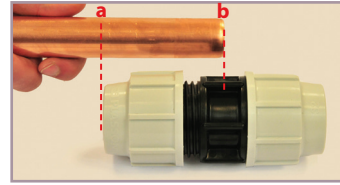
Plasson UK Ltd  
Plasson House  
27 Albert Drive  
Burgess Hill  
West Sussex  
RH15 9TN

Tel: 01444 244446  
Fax: 01444 258683  
sales@plasson.co.uk

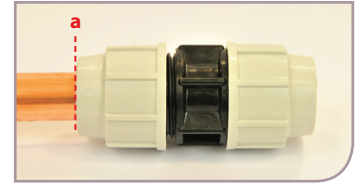
### Copper Adaptor Set table X and Y (7438)



Remove nut from fitting and discard white split ring (except 35, 42, and 54mm copper, where the white split ring is used as a spacer). Push black rubber seal into fitting body and assemble components in the order shown above.



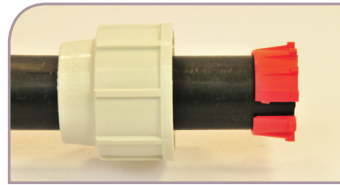
Place nut onto fitting leaving half the thread visible. Cut the copper pipe square and remove all burrs and sharp edges. Mark pipe at "a" when the pipe end reaches the centre of the body of the fitting, as shown by "b" above.



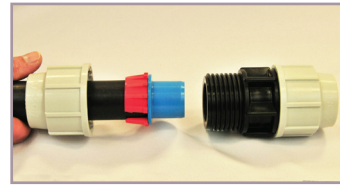
Push and twist the pipe through the nut, adaptor and metal ring into the body of the fitting, until the mark is in line with the end of the nut as shown. Tighten the nut with a PLASSON wrench.

**Note:** Lubrication of the pipe end will ease insertion (use silicon lubricant).

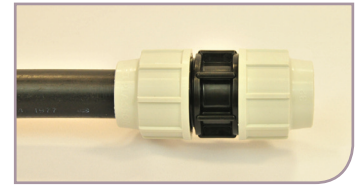
### Imperial & Irish Pipe Adaptor (7786 / 7787 / 7788 / 7789 / 7995 / 7996)



Remove nut from fitting and discard white split ring (unless using 1 1/2" pipe). Mount nut on pipe and assemble red split ring flush with the pipe end (reuse white split ring for 1 1/2" pipe).

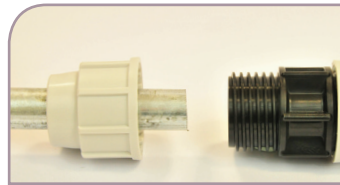


Push the barbed end of the adaptor into the pipe until it meets the stop. Then push the plain end of the adaptor into the fitting until it meets the stop.

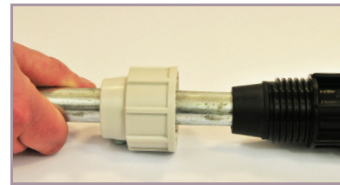


Screw nut tightly towards the body of the fitting. Use a PLASSON wrench for 1" pipe and above.

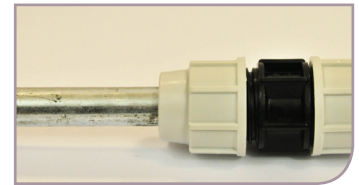
### Universal Pipe Adaptor (7896/7898)



Prepare pipe by ensuring that the end is free from grease and roughen outer surface with wire wool or similar. Remove nut from end of fitting and mount onto pipe, discard white split ring.

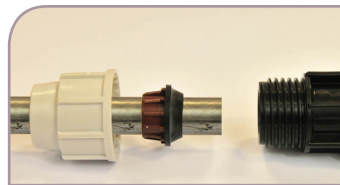


Push adaptor into fitting to the stop. Also push and twist the pipe into the fitting until it meets the internal stop.

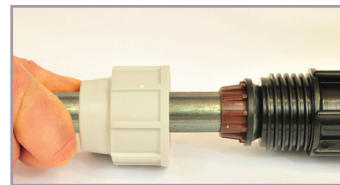


Screw the nut tightly towards the body of the fitting. Final tightening with a PLASSON wrench is essential. **The installations MUST be anchored against end loading.**

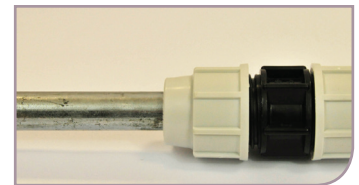
### Lead Adaptor (7782)



Remove nut from fitting and discard white split ring. Mount nut onto pipe followed by brown split ring and seal ring.



These components should be positioned 20mm from the pipe end.



Push pipe into the body of the fitting and tighten firmly with a PLASSON wrench (it is important that the pipe is NOT pushed fully up to the stop inside the fitting).

**Note:** This product seals on the outside of the pipe and it is therefore important that the external part of the pipe (where the seal is made) is in good condition. If external pipe is of poor quality it may be preferable to use the Plass4 Universal fitting.