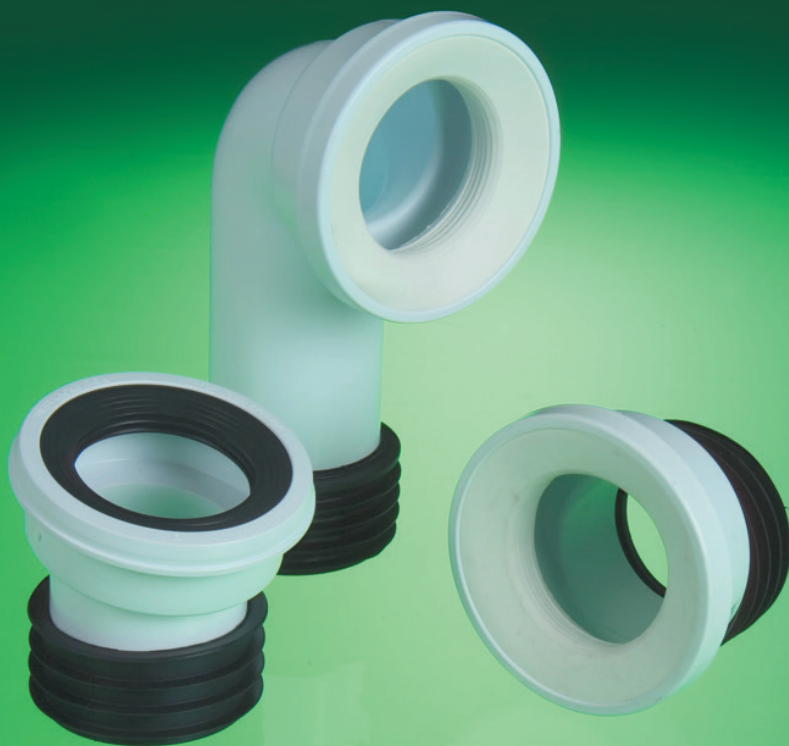


Soil-WC Connectors




SOIL-WC CONNECTORS BS EN 1329 - 1:2000, BS 5627:1984



A full range of horizontal pan connectors are available for use with WCs as specified in BS 5627:1984. Made in polypropylene, they are supplied with an integral sealing diaphragm which allows for up to 5° misalignment in any direction.

Product	Code
Swan neck	
	SP100
Straight	
	SP101
Offset	
	SP102

Product	Code
90 Bend°	
	SP103
250mm Extension	
	SP104
Flexible	
	SP106

Product	Code
14° Connector	
	SP108

