



Fittings & Accessories for Water Pipe

2018 Price Catalogue

www.plasson.co.uk

Here at PLASSON we continually strive to develop and expand our range of fittings reflecting our ongoing strategy to deliver innovative solutions in the market.

PLASSON have one of the widest ranges of pipe fittings in the world with sizes ranging from 16mm to 900mm, pressure ratings 0 bar to 25 bar, accepting nearly all existing pipe ranges, metric and imperial including polyethylene, lead, copper and galvanised. PLASSON have a 50 year in the ground track record for its products. We pride ourselves not only on the quality of our fittings but also on our high standard of service, delivery and aftersales support.

Uniquely placed in the UK market to supply a full range of fittings and accessories for water & gas pipe, our dedicated sales and technical team will work with you to provide the foremost solutions for joining supply pipes.



index

introduction	2
mechanical	4-9
universal & adaptors	10-15
pushfit	16-17
valves	18-23
metering	24-27
threaded	28-29
repair clamps	30-31
tools/accessories	32-33
irish fittings	34-35
electrofusion	36-51
fitting instructions	52-55
technical details	56-57
ef specialist tooling	58
contact details	59



PLASSON mechanical



PLASSON mechanical fittings offer solutions for connecting PE pipes, used for conveying water and other fluids in urban and inter-urban infrastructure, industrial, mining, landscape, farming as well as optical fibre duct systems.

The fittings are designed to withstand working pressures of up to 16bar, and also include valves which allow the regulation of flow. These fittings are manufactured in diameters ranging from 16mm to 160mm.

7010 Coupler



Code	d	Bag	£ ea
7010BB0	16	10	3.60
7010CC0	20	10	4.50
7010DD0	25	10	4.81
7010EE0	32	5	11.30
7010FF0	40	1	23.97
7010GG0	50	1	24.96
7010HH0	63	1	36.47
87010JJ	75	1	61.95
87010KK0	90	1	71.45
87010LL0	110	1	124.56
7010MM0	125	1	268.21
17010P0	160	1	299.40

7110 Reducing Coupler



Code	d	Bag	£ ea
7110CB0	20 x 16	10	8.22
7110DB0	25 x 16	10	9.03
7110DC0	25 x 20	10	9.03
7110EC0	32 x 20	5	15.28
7110ED0	32 x 25	5	15.28
7110FD0	40 x 25	1	25.89
7110FE0	40 x 32	1	25.89
7110GD0	50 x 25	1	30.33
7110GE0	50 x 32	1	34.66
7110GF0	50 x 40	1	34.66
7110HD0	63 x 25	1	37.02
7110HE0	63 x 32	1	43.87
7110HF0	63 x 40	1	43.87
7110HG0	63 x 50	1	43.87
87110JG0	75 x 50	1	57.62
87110JH0	75 x 63	1	57.62
87110KH0	90 x 63	1	76.57
87110KJ0	90 x 75	1	76.57
87110LK0	110 x 90	1	131.70

7610 Repair Coupler



Code	d	Bag	£ ea
7610CC0	20	10	5.42
7610DD0	25	10	6.51
7610EE0	32	5	14.68
7610FF0	40	1	26.48
7610GG0	50	1	29.96
7610HH0	63	1	41.81
87610JJ0	75	1	61.33
87610KK0	90	1	82.75
87610LL0	110	1	141.25
7610MM0	125	1	283.71

7120 End Plug



Code	d	Bag	£ ea
7120C00	20	10	5.53
7120D00	25	10	7.11
7120E00	32	5	10.33
7120F00	40	1	16.09
7120G00	50	1	21.47
7120H00	63	1	35.98
87120J00	75	1	46.68
87120K00	90	1	63.40
87120L00	110	1	75.48

7129 Plug Adaptor



Code	d	Bag	£ ea
7129C00	20	10	2.24
7129D00	25	10	2.43
7129E00	32	10	2.56
7129F00	40	5	3.14
7129G00	50	5	5.08
7129H00	63	5	5.53

7020 Male Adaptor
Metric x MI BSP



Code	d	Bag	£ ea
7020B00	16 x 3/8"	10	2.98
7020B10	16 x 1/2"	10	2.98
7020B20	16 x 3/4"	10	2.98
7020C10	20 x 1/2"	10	4.20
7020C20	20 x 3/4"	10	4.49
7020C30	20 x 1"	10	6.26
7020D10	25 x 1/2"	10	5.04
7020D20	25 x 3/4"	10	5.04
7020D30	25 x 1"	10	7.79
7020E20	32 x 3/4"	5	7.79
7020E30	32 x 1"	5	7.79
7020E40	32 x 1 1/4"	5	7.79
7020E50	32 x 1 1/2"	5	7.79
7020F30	40 x 1"	1	14.93
7020F40	40 x 1 1/4"	1	14.93
7020F50	40 x 1 1/2"	1	14.93
7020F60	40 x 2"	1	14.93
7020G30	50 x 1"	1	19.08
7020G40	50 x 1 1/4"	1	19.08
7020G50	50 x 1 1/2"	1	19.08
7020G60	50 x 2"	1	19.08
7020H40	63 x 1 1/4"	1	25.56
7020H50	63 x 1 1/2"	1	25.56
7020H60	63 x 2"	1	25.56
7020H70	63 x 2 1/2"	1	25.56
87020J60	75 x 2"	1	38.77
87020J70	75 x 2 1/2"	1	38.77
87020J80	75 x 3"	1	38.77
87020K60	90 x 2"	1	52.53
87020K70	90 x 2 1/2"	1	52.53
87020K80	90 x 3"	1	52.53
87020K90	90 x 4"	1	52.53
87020L60	110 x 2"	1	89.00
87020L80	110 x 3"	1	89.00
87020L90	110 x 4"	1	89.00

7030 Female Adaptor
Metric x FI BSP



Code	d	Bag	£ ea
7030B10	16 x 1/2"	10	3.59
7030B20	16 x 3/4"	10	3.59
7030C10	20 x 1/2"	10	5.04
7030C20	20 x 3/4"	10	5.04
7030C30	20 x 1"	10	5.04
7030D20	25 x 3/4"	10	5.51
7030D30	25 x 1"	10	5.51
7030E20	32 x 3/4"	5	7.42
7030E30	32 x 1"	5	7.42
7030E40	32 x 1 1/4"	5	7.42
7030F30	40 x 1"	1	17.22
7030F40	40 x 1 1/4"	1	17.22
7030F50	40 x 1 1/2"	1	17.22
7030G40	50 x 1 1/4"	1	23.46
7030G50	50 x 1 1/2"	1	23.46
7030G60	50 x 2"	1	23.46
7030H60	63 x 2"	1	29.49
87030J60	75 x 2"	1	39.62
87030J70	75 x 2 1/2"	1	39.62
87030K60	90 x 2"	1	54.21
87030K80	90 x 3"	1	54.21
87030K90	90 x 4"	1	54.21
87030L80	110 x 3"	1	113.84
87030L90	110 x 4"	1	113.84

7060 Female Adaptor
Parallel Thread



Code	d	Bag	£ ea
7060D20	25 x 3/4"	1	7.43
7060D30	25 x 1"	1	7.43
7060E30	32 x 1"	1	9.91



7040 90° Tee



Code	d	Bag	£ ea
7040BBB	16	10	6.29
7040CCC	20	10	7.89
7040DDD	25	5	12.32
7040EEE	32	5	16.58
7040FFF	40	1	32.15
7040GGG	50	1	35.72
7040HHH	63	1	53.46
87040JJJ	75	1	96.03
87040KKK	90	1	135.57
87040LLL	110	1	275.40
17040PP	160	1	502.78

7045 90° Repair Tee



Code	d	Bag	£ ea
7045CCC	20	10	9.99
7045DDD	25	10	14.06
7045EEE	32	5	19.16
7045FFF	40	1	39.31
7045GGG	50	1	44.03
7045HHH	63	1	62.28

7340 90° Reducing Tee



Code	d	Bag	£ ea
7340CBC	20 x 16 x 20	10	10.28
7340DCD	25 x 20 x 25	5	14.97
7340EDE	32 x 25 x 32	5	21.88
7340FDF	40 x 25 x 40	1	34.27
7340FEF	40 x 32 x 40	1	35.98
7340GDG	50 x 25 x 50	1	52.24
7340GEG	50 x 32 x 50	1	52.24
7340GFG	50 x 40 x 50	1	52.24
7340HEH	63 x 32 x 63	1	62.98
7340HFH	63 x 40 x 63	1	62.98
7340HGH	63 x 50 x 63	1	62.98
87340JHJ	75 x 63 x 75	1	107.88

7740 90° Enlarging Tee



Code	d	Bag	£ ea
7740DED	25 x 32 x 25	5	24.39

7840 90° Tee

Male Offtake



Code	d	Bag	£ ea
7840C1C	20 x 1/2" x 20	10	6.81
7840C2C	20 x 3/4" x 20	10	6.81
7840D1D	25 x 1/2" x 25	5	11.06
7840D2D	25 x 3/4" x 25	5	11.06
7840E3E	32 x 1" x 32	5	15.69
7840F4F	40 x 1 1/4" x 40	1	23.19
7840F5F	40 x 1 1/2" x 40	1	23.19
7840G4G	50 x 1 1/4" x 50	1	32.77
7840G5G	50 x 1 1/2" x 50	1	32.77
7840H4H	63 x 1 1/4" x 63	1	44.38
7840H5H	63 x 1 1/2" x 63	1	44.38
7840H6H	63 x 2" x 63	1	44.38

7140 90° Tee

Female Offtake



Code	d	Bag	£ ea
7140B1B	16 x 1/2" x 16	10	5.83
7140B2B	16 x 3/4" x 16	10	5.83
7140C1C	20 x 1/2" x 20	10	7.25
7140C2B	20 x 3/4" x 16	10	7.25
7140C2C	20 x 3/4" x 20	10	7.25
7140D1D	25 x 1/2" x 25	5	11.95
7140D2C	25 x 3/4" x 20	5	11.95
7140D2D	25 x 3/4" x 25	5	11.95
7140D3D	25 x 1" x 25	5	11.95
7140D4D	25 x 1 1/4" x 25	5	11.95
7140E2E	32 x 3/4" x 32	5	15.69
7140E3D	32 x 1" x 25	5	15.69
7140E3E	32 x 1" x 32	5	15.69
7140E4E	32 x 1 1/4" x 32	5	15.69
7140E5E	32 x 1 1/2" x 32	5	15.69
7140F3F	40 x 1" x 40	1	25.44
7140F4F	40 x 1 1/4" x 40	1	27.51
7140F5F	40 x 1 1/2" x 40	1	27.51
7140F6F	40 x 2" x 40	1	27.51
7140G5G	50 x 1 1/2" x 50	1	33.19
7140G6G	50 x 2" x 50	1	33.19
7140H4H	63 x 1 1/4" x 63	1	46.57
7140H5H	63 x 1 1/2" x 63	1	46.57
7140H6H	63 x 2" x 63	1	46.57
87140J6J	75 x 2" x 75	1	87.54
87140J7J	75 x 2 1/2" x 75	1	87.54
87140J8J	75 x 3" x 75	1	87.54
87140K8K	90 x 3" x 90	1	104.50
87140L9L	110 x 4" x 110	1	190.27

7140 90° Slip Tee

Female Offtake



Code	d	Bag	£ ea
7140G50	50 x 1 1/2" x 50	1	40.48
7140H40	63 x 1 1/4" x 63	1	54.02

7050 90° Elbow



Code	d	Bag	£ ea
7050BB0	16	10	4.04
7050CC0	20	10	5.57
7050DD0	25	10	8.20
7050EE0	32	5	13.46
7050FF0	40	1	26.70
7050GG0	50	1	28.54
7050HH0	63	1	37.86
87050JJ0	75	1	107.88
87050KK0	90	1	137.83
87050LL0	110	1	225.97
17050P0	160	1	357.36

7510 90° Reducing Elbow



Code	d	Bag	£ ea
7510DC0	25 x 20	10	9.46

7460 45° Elbow



Code	d	Bag	£ ea
7460EE0	32	5	15.77
7460FF0	40	1	26.70
7460GG0	50	1	28.54
7460HH0	63	1	37.86
87460KK0	90	1	164.43
87460LL0	110	1	252.79

7750 Wall Plate Elbow PP



Code	d	Bag	£ ea
7750C10	20 x 1/2"	5	11.26
7750D20	25 x 3/4"	5	15.02

9055 Wall Plate Elbow DZR



Code	d	Bag	£ ea
9055C10	20 x 1/2"	1	24.47
9055D20	25 x 3/4"	1	30.70

7450 45° Elbow Male Offtake



Code	d	Bag	£ ea
7450C10	20 x 1/2"	10	3.72
7450C20	20 x 3/4"	10	3.72

7150 90° Elbow Female Offtake



Code	d	Bag	£ ea
7150B10	16 x 1/2"	10	4.18
7150C10	20 x 1/2"	10	5.52
7150C20	20 x 3/4"	10	5.52
7150D10	25 x 1/2"	10	7.25
7150D20	25 x 3/4"	10	7.25
7150D30	25 x 1"	10	7.25
7150E20	32 x 3/4"	5	11.68
7150E30	32 x 1"	5	11.68
7150E40	32 x 1 1/4"	5	11.68
7150F30	40 x 1"	1	23.53
7150F40	40 x 1 1/4"	1	23.53
7150F50	40 x 1 1/2"	1	23.53
7150F60	40 x 2"	1	23.53
7150G30	50 x 1"	1	26.33
7150G40	50 x 1 1/4"	1	26.33
7150G50	50 x 1 1/2"	1	26.33
7150G60	50 x 2"	1	26.33
7150H40	63 x 1 1/4"	1	33.05
7150H50	63 x 1 1/2"	1	33.05
7150H60	63 x 2"	1	33.05
87150J60	75 x 2"	1	63.01
87150J80	75 x 3"	1	63.01

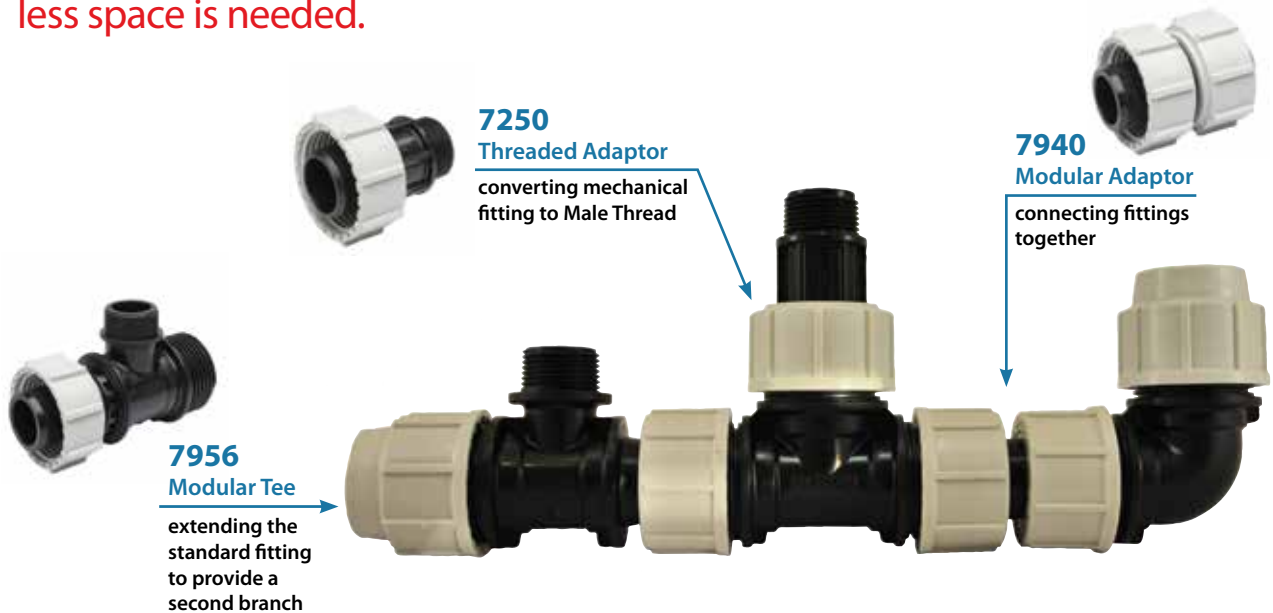
7850 90° Elbow Male Offtake



Code	d	Bag	£ ea
7850C10	20 x 1/2"	10	4.05
7850C20	20 x 3/4"	10	4.05
7850D10	25 x 1/2"	10	4.73
7850D20	25 x 3/4"	10	4.73
7850D30	25 x 1"	10	4.73
7850E30	32 x 1"	5	7.97
7850F30	40 x 1"	1	13.55
7850F40	40 x 1 1/4"	1	13.55
7850F50	40 x 1 1/2"	1	13.55
7850G30	50 x 1"	1	18.62
7850G40	50 x 1 1/4"	1	18.62
7850G50	50 x 1 1/2"	1	18.62
7850H40	63 x 1 1/4"	1	22.88
7850H50	63 x 1 1/2"	1	22.88
7850H60	63 x 2"	1	22.88
87850K80	90 x 3"	1	66.37
87850L90	110 x 4"	1	85.23

What are the modular adaptor, threaded adaptor and modular tee for?

These innovative PLASSON products allow mechanical fittings to be connected without the use of pipe, meaning the joint is more secure and less space is needed.



7940 Modular Adaptor

For close/tight assemblies



Code	d	Bag	£ ea
7940C00	20	1	6.14
7940D00	25	1	6.73
7940E00	32	1	12.18
7940F00	40	1	17.23
7940G00	50	1	27.11
7940H00	63	1	39.41

7250 Threaded Adaptor

Convert std fitting to MI BSP



Code	d	Bag	£ ea
7250255	25 x 1/2"	1	7.30
7250257	25 x 3/4"	1	7.30
7250325	32 x 1/2"	1	7.79
7250327	32 x 3/4"	1	7.79
7250321	32 x 1"	1	7.79
7250405	40 x 1 1/2"	1	9.52
7250501	50 x 1"	1	13.84
7250508	50 x 1 1/4"	1	13.84
7250505	50 x 1 1/2"	1	13.84
7250502	50 x 2"	1	13.84
7250631	63 x 1"	1	20.11
7250635	63 x 1 1/2"	1	20.11
7250632	63 x 2"	1	20.11
7250625	63 x 2 1/2"	1	20.11
7250715	75 x 1 1/2"	1	30.99
7250752	75 x 2"	1	30.99
7250725	75 x 2 1/2"	1	30.99
7250753	75 x 3"	1	30.99

7956 Modular Tee

Male Offtake
for building manifolds



Code	d	Bag	£ ea
7956E3E	32 x 1" x 32	1	44.95
7956F4F	40 x 1 1/4" x 40	1	60.13
7956F5F	40 x 1 1/2" x 40	1	60.13
7956G4G	50 x 1 1/4" x 50	1	84.27
7956G5G	50 x 1 1/2" x 50	1	84.27
7956G6G	50 x 2" x 50	1	84.27
7956H4H	63 x 1 1/4" x 63	1	117.62

7810 Coupler with Riser



Code	d	Bag	£ ea
7810G2G	50 x 3/4" x 50	1	24.31
7810G3G	50 x 1" x 50	1	24.31
7810H3H	63 x 1" x 63	1	39.54
7810J2J	75 x 3/4" x 75	1	55.37

7640 45° Tee



Code	d	Bag	£ ea
7640HHH	63	1	62.28
87640KKK	90	1	200.27
87640LLL	110	1	318.24

7550 Y-Fitting



Code	d	Bag	£ ea
7550CC2	20 x 20 x 3/4"	10	8.05
7550DD2	25 x 25 x 3/4"	5	12.03

7350 90° Spigot Elbow



Code	d	Bag	£ ea
7350GF0	50 x 40	1	21.98
7350GG0	50 x 50	1	21.15
7350HG0	63 x 50	1	27.14

7540 Cross Threaded Female Offtake



Code	d	Bag	£ ea
7540C20	20 x 3/4"	1	12.03

7220 Mechanical Flange Adaptor



Code	d	Bag	£ ea
7220G50	50 x 1 1/2"	1	47.90
7220G60	50 x 2"	1	47.90
7220H60	63 x 2"	1	74.03
87220J70	75 x 2 1/2"	1	86.37
87220K80	90 x 3"	1	101.67
87220K90	90 x 4"	1	101.67
87220L90	110 x 4"	1	127.10
7220MM0	125 x 5"	1	194.91
7220M00	125 x 6"	1	194.91
17220PM	160 x 5"	1	263.26
17220P0	160 x 6"	1	263.26

7236 Spigot Flange Adaptor



Code	d	Bag	£ ea
7236G50	50 x 1 1/2"	1	37.86
7236G60	50 x 2"	1	37.86
7236H60	63 x 2"	1	44.92
7236H70	63 x 2 1/2"	1	44.92
87236J60	75 x 2"	1	53.41
87236J70	75 x 2 1/2"	1	53.41
87236J80	75 x 3"	1	53.41
87236K70	90 x 2 1/2"	1	67.78
87236K80	90 x 3"	1	67.78
87236K90	90 x 4"	1	67.78
87236L80	110 x 3"	1	101.67
87236L90	110 x 4"	1	101.67
87236LL0	110 x 5"	1	114.66
17230PM	160 x 5"	1	189.27
17230P0	160 x 6"	1	189.27

7228 EPDM Flange Gasket



Code	d	Bag	£ ea
7228550	1 1/2"	1	1.75
7228660	2"	1	2.44
7228770	2 1/2"	1	3.20
7228880	3"	1	3.86
7228MM0	4"	1	4.97
7228NN0	5"	1	5.63
7228PP0	6"	1	7.61
7228QQ0	200/225 x 8"	1	28.46
7228SS0	250/280 x 10"	1	29.64
7228TT0	315 x 12"	1	37.20

SLIDE N'SEAL



Universal Slip Coupler

Connect or repair multiple pipe types with one fitting

1761 Universal Slip Coupler Universal x Universal



Code	d	Bag	£ ea
176100024028	24-28 x 24-28	1	40.43
176100031035	31-35 x 31-35	1	49.35
176100040043	40-43 x 40-43	1	60.69
176100048051	48-51 x 48-51	1	73.50
176100060064	60-64 x 60-64	1	95.34

What is it?

Repair coupler, connecting to a variety of pipe materials. Repairs large holes and gaps - long insertion depth and body.

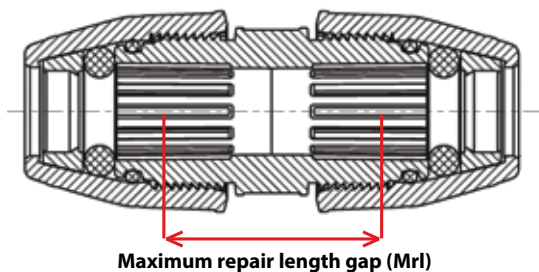
What is it made from?

Body: PPH, Safety seal: EPDM, 'O' ring: EPDM
Grip ring: Acetal & stainless steel, Nut: PPH

Which pipes?

Metric PE, Imperial PE, steel, Cu, lead, PEX, PB, PVC-U, ABS & PP-R.

Repair lengths



d (popular pipes)	Mrl	L
24-28 (25mm, 3/4")	90mm	200
31-35 (32mm, 1")	100mm	210
40-43 (40mm, 1 1/4")	110mm	250
48-51 (50mm, 1 1/2")	120mm	270
60-64 (63mm, 2")	130mm	310

PLASS4 PE x Universal

What is it?

A PLASSON universal fitting which connects metric polyethylene to imperial polyethylene (alkathene), copper (table X & Y), lead, galvanised steel, PVC-U and poly-york. Only a few fitting sizes are needed to cover all pipes from 15mm to 50mm.

77017 Plass4 Coupler PE x Universal



Code	d	Bag	£ ea
77017251	25 x 15-22	1	16.52
77017252	25 x 20-27	1	17.65
77017253	25 x 27-35	1	23.29
77017500	32 x 20-27	1	23.29
77017323	32 x 27-35	1	27.28
77017504	50 x 35-50	1	50.41

77057 Plass4 Elbow PE x Universal



Code	d	Bag	£ ea
77057251	25 x 15-22	1	16.97
77057252	25 x 20-27	1	18.43
77057253	25 x 27-35	1	29.63



pushfit Universal Universal Couplers

The PLASSON 10017 pushfit Universal connects metric PE to other pipe materials such as imperial polyethylene, copper, lead, PVC, poly-york and galvanised iron pipes.

10017 Universal Coupler PE x Universal



Code	d	Bag	£ ea
100170025018	25 x 14-18	5	16.50
100170025022	25 x 19-22	5	16.50
100170025028	25 x 24-28	5	16.50

The Plasson 10017C allows pushfit connection of copper, PEX or PP with the universal end fitting all pipes as above, including metric PE.

10017C Universal Coupler 22mm Cu/PB/PEX x Universal



Code	d	Bag	£ ea
10017C022018	22 x 14-18	5	19.68
10017C022022	22 x 19-22	5	19.68
10017C022028	22 x 24-28	5	19.68

These fittings revolutionise the extending or repair of old pipes with a neat attractive fitting. Pushfit to the metric end, simply tighten the universal end to provide a reliable long term fix with an appearance that will satisfy the most demanding customer.



Connecting to Cu/PB/PEX

1001C Coupler PE to Cu/PB/PEX



Code	d	Bag	£ ea
1001CU020015	20 x 15	5	8.59
1001CU025015	25 x 15	5	8.94
1001CU025022	25 x 22	5	9.17
1001CU032028	32 x 28	5	17.17

1002C Male Adaptor Cu/ PB/PEX



Code	d	Bag	£ ea
1002C7015007	15 x 3/4"	5	7.47
1002C7022007	22 x 3/4"	5	7.86
1002C7028010	28 x 1"	5	12.59

1003C Female Adaptor Cu/ PB/PEX



Code	d	Bag	£ ea
1003C701507	15 x 3/4"	5	9.94
1003C702207	22 x 3/4"	5	10.31

When using PB/ PEX pipes, use pipe manufacturers liner.



PlasShield

Connecting to Barrier Pipe

Barrier pipe is recommended for use in contaminated ground, the PlasShield adaptor will allow the standard Plasson fitting to be adapted to accept barrier pipes. The design of the adaptor meets the requirements of BS8588 (formerly WIS 4-32-19)

7400 PlasShield Conversion Kit For Type A barrier pipe (BS8588)

Wrench tightening recommended



Code	d	Bag	Grip ring	£ ea
7400005	26.2-27.6	5	blue	3.08
7400002	33.3-34.5	5	red	4.35
7400004	64.8-66.0	5	grey	6.56

7400 PlasShield Conversion Kit For Type B barrier pipe



Code	d	Bag	Grip ring	£ ea
7400000	25	5	white	2.06
7400001	32	5	white	2.84
7400003	63	5	white	6.56

To convert a standard metric fitting to accept barrier pipe, discard the original grey nut and white grip ring, replace with the black nut, barbed adaptor and coloured grip ring from the kit, assemble as shown in the instructions on pg52.



When used in buried applications, it may be necessary to wrap the fitting with aluminium foil tape & petrolatum tape or waterproof tape as required by your local water utility company.

BLACK 2 BLUE™ BLACK 2 BLACK™

Imperial/Metric

7418 Coupler Metric to Imperial



Code	d	Bag	£ ea
74181C0	1/2" x 20	10	4.91
74181CC	3/8" x 20	10	7.29
74181D0	1/2" x 25	10	5.64
74181DC	3/8" x 25	10	9.73
74182D0	3/4" x 25	10	5.59
74183E0	1" x 32	5	11.95
74184E0	1 1/4" x 32	1	24.50
74184G0	1 1/4" x 50	1	31.50
74185G0	1 1/2" x 50	1	31.50
74185H0	1 1/2" x 63	1	40.15
74186H00	2" x 63	1	44.08

7478 90° Elbow Metric to Imperial



Code	d	Bag	£ ea
74781C0	1/2" x 20	10	6.59
74781D0	1/2" x 25	10	11.28
74782D0	3/4" x 25	10	9.50
74783E0	1" x 32	5	15.82

7404 Coupler Imperial



Code	d	Bag	£ ea
7404110	1/2" x 1/2"	10	5.19
7404220	3/4" x 3/4"	10	5.53
7404330	1" x 1"	5	12.99
7404550	1 1/2" x 1 1/2"	1	28.70
7404660	2" x 2"	1	41.94

7388 Female Adaptor Imperial



Code	d	Bag	£ ea
7388205	1/2" x 1/2"	10	5.79
7388220	3/4" x 3/4"	10	6.34
7388330	1" x 1"	5	8.53
7388550	1 1/2" x 1 1/2"	1	26.97
7388660	2" x 2"	1	33.93

7428 Male Adaptor Imperial



Code	d	Bag	£ ea
7428110	1/2" x 1/2"	10	4.83
7428220	3/4" x 3/4"	10	5.79
7428330	1" x 1"	5	8.97
7428550	1 1/2" x 1 1/2"	1	21.92
7428660	2" x 2"	1	29.38

Connecting to Copper pipe (above & below ground)

7438 Copper Adaptor

Table X & Y



Code	d	Bag	£ ea
7438015	20 x 15	10	4.43
7438016	25 x 15	10	5.72
7438022	25 x 22	10	5.42
7438028	32 x 28	10	8.11
7438035	40 x 35	10	9.99
7438042	50 x 42	10	13.67
7438054	63 x 54	1	15.28

See pg53 for fitting instructions.

Connecting to Lead

7782 Lead Adaptor



Code	Nearest Equivalent Imperial Size (IN x LB/YD)	Fitting Size	Bore (mm)	Wall Thickness (mm)	£ ea
7782004	3/8" x 5lb	25	10	5.0	2.48
7782005	1/2" x 7lb	25	12	5.6	2.05
7782059	1/2" x 9lb	32	12	6.7	2.95
7782007	3/4" x 9lb	32	20	5.3	2.49
7782711	3/4" x 11lb	40	20	6.4	4.86
7782116	1" x 16lb	50	25	8.0	6.01

Connecting to Galv

7896 Universal Adaptor

For Galvanised & PVC



No end load restraint. Anchoring of pipe and fitting required.

Code	d	Bag	£ ea
7896015	20 x 15	20	2.98
7896022	25 x 22 / 1/2"	20	3.51
7896028	32 x 28 / 3/4"	10	3.87
7896035	40 x 35 / 1"	5	12.88
7896042	50 x 42 / 1 1/4"	5	13.95

Connecting to Steel

7898 Adaptor

For Steel Pipe



No end load restraint. Anchoring of pipe and fitting required.

Code	d	Bag	£ ea
7898G50	50 x 1 1/2"	1	20.67
7898H60	63 x 2"	1	22.77

Connecting to PVC

7970 Metric PVC Adaptor



Code	d	Bag	£ ea
7970C00	20	1	2.03
7970D00	25	1	2.25
7970E00	32	1	2.48
7970F00	40	1	3.17
7970G00	50	1	4.76
7970H00	63	1	5.43

7930 Reducing Set



Code	d	Bag	£ ea
7930DC0	25 x 20	10	3.24
7930EC0	32 x 20	10	4.73
7930ED0	32 x 25	10	4.73
7930FE0	40 x 32	10	6.59
7930GD0	50 x 25	5	9.63
7930GE0	50 x 32	5	9.36
7930GF0	50 x 40	5	10.02
7930HD0	63 x 25	5	14.01
7930HE0	63 x 32	5	14.01
7930HG0	63 x 50	5	14.01
7930JH0	75 x 63	5	34.95
7930LH0	110 x 63	1	56.75
7930LJ0	110 x 75	1	53.64
7930LK0	110 x 90	1	45.37

7785 Damaged Metric Pipe Adaptor



Code	d	Bag	£ ea
7785C00	20	20	0.85
7785D00	25	20	1.05
7785E00	32	20	1.24
7785H00	63	1	1.62

7950 Pipe Liner



Code	d	Bag	£ ea
7950C00	20	40	0.38
7950D00	25	40	0.39
7950E00	32	40	0.64
7950F00	40	20	1.10
7950G00	50	20	1.24
7950H00	63	10	1.47

Adaptors to convert Metric Fittings to Imperial pipe

7786 Class C Low Density

BS1972/67



Code	Nominal Size	Fitting Size	£ ea
7786004	3/8"	20	1.32
7786005	1/2"	20	1.10
7786007	3/4"	25	1.32
7786010	1"	32	1.54
7786012	1 1/4"	50	3.75
7786015	1 1/2"	50	3.75
7786020	2"	63	5.63

7787 Class D Low Density

BS1972/67



Code	Nominal Size	Fitting Size	£ ea
7787005	1/2"	20	1.10
7787007	3/4"	25	1.32
7787010	1"	32	1.54
7787012	1 1/4"	50	3.75
7787015	1 1/2"	50	3.75

7788 Class C High Density

BS3284/67



Code	Nominal Size	Fitting Size	£ ea
7788005	1/2"	20	1.10
7788007	3/4"	25	1.32
7788010	1"	32	1.54
7788012	1 1/4"	50	3.75
7788015	1 1/2"	50	3.75
7788020	2"	63	5.63

7789 Class D High Density

BS3284/67



Code	Nominal Size	Fitting Size	£ ea
7789004	3/8"	20	1.32
7789005	1/2"	20	1.10
7789007	3/4"	25	1.32
7789010	1"	32	1.54
7789012	1 1/4"	50	3.75
7789015	1 1/2"	50	3.75
7789020	2"	63	5.63

7995 Normal Gauge

IS 134:1977



Code	Nominal Size	Fitting Size	£ ea
7995005	1/2"	20	0.83
7995007	3/4"	25	1.00
7995010	1"	32	1.18
7995012	1 1/4"	50	2.73
7995015	1 1/2"	50	3.45
7995020	2"	63	5.41

7996 Heavy Gauge

IS 134:1977



Code	Nominal Size	Fitting Size	£ ea
7996005	1/2"	20	0.83
7996007	3/4"	25	1.00
7996010	1"	32	1.18
7996012	1 1/4"	50	2.73
7996015	1 1/2"	50	3.45

For fitting instructions see pg53.

Pipe Sizes of Imperial Polyethylene (Alkathene)



	OD (mm)	3/8"	1/2"	3/4"	1"	1 1/4"	1 1/2"	2"
Class C Low Density	Min Max OD	17.00 - 17.30	21.20 - 21.50	26.60 - 26.90	33.40 - 33.70	42.10 - 42.50	48.10 - 48.50	60.10 - 60.60
	Wall Thickness	2.20 - 2.50	2.70 - 3.00	3.40 - 3.70	4.20 - 4.60	5.30 - 5.80	6.10 - 6.70	7.60 - 8.40
Class D Low Density	Min Max OD		21.20 - 21.50	26.60 - 26.90	33.40 - 33.70	42.10 - 42.50	48.10 - 48.50	
	Wall Thickness		3.40 - 3.70	4.30 - 4.70	5.40 - 5.90	6.80 - 7.50	7.80 - 8.60	
Class C High Density	Min Max OD		21.20 - 21.50	26.60 - 26.90	33.40 - 33.70	42.10 - 42.50	48.10 - 48.50	60.10 - 60.60
	Wall Thickness		1.80 - 2.00	2.30 - 2.60	2.80 - 3.10	3.60 - 4.00	4.10 - 4.50	5.10 - 5.60
Class D High Density	Min Max OD	17.00 - 17.30	21.20 - 21.50	26.60 - 26.90	33.40 - 33.70	42.10 - 42.50	48.10 - 48.50	60.10 - 60.60
	Wall Thickness	1.90 - 2.10	2.30 - 2.60	2.90 - 3.20	3.70 - 4.10	4.60 - 5.10	5.30 - 5.80	6.60 - 7.30
Normal Gauge	Min Max OD		16.95 - 17.30	24.95 - 25.40	31.25 - 31.75	37.50 - 38.10	43.80 - 44.45	60.00 - 60.85
	Wall Thickness		2.30 - 2.60	3.10 - 3.50	3.10 - 3.50	3.10 - 3.50	3.50 - 3.90	4.56 - 5.20
Heavy Gauge	Min Max OD		20.70 - 21.10	27.05 - 27.45	33.85 - 34.10	42.00 - 42.65	47.95 - 48.65	
	Wall Thickness		4.30 - 4.85	4.30 - 4.85	4.30 - 4.85	5.05 - 5.60	5.35 - 5.90	

16076 Saddle Single Outlet With Reinforcing Ring, Stainless Bolts



Code	d	Bag	£ ea
16076C10	20 x 1/2"	1	4.88
16076D10	25 x 1/2"	1	5.70
16076D20	25 x 3/4"	1	5.70
16076E10	32 x 1/2"	1	6.29
16076E20	32 x 3/4"	1	6.29
16076E30	32 x 1"	1	6.29
16076F10	40 x 1/2"	1	7.12
16076F20	40 x 3/4"	1	7.12
16076F30	40 x 1"	1	7.12
16076G10	50 x 1/2"	1	7.95
16076G20	50 x 3/4"	1	7.95
16076G30	50 x 1"	1	7.95
16076G40	50 x 1 1/4"	1	7.95
16076H10	63 x 1/2"	1	9.54
16076H20	63 x 3/4"	1	9.54
16076H30	63 x 1"	1	9.54
16076H40	63 x 1 1/4"	1	9.54
16076H50	63 x 1 1/2"	1	9.54
16076J10	75 x 1/2"	1	12.96
16076J20	75 x 3/4"	1	12.96
16076J30	75 x 1"	1	12.96
16076J40	75 x 1 1/4"	1	12.96
16076J50	75 x 1 1/2"	1	12.96
16076J60	75 x 2"	1	12.96
16076K10	90 x 1/2"	1	15.75
16076K20	90 x 3/4"	1	15.75
16076K30	90 x 1"	1	15.75
16076K40	90 x 1 1/4"	1	15.75
16076K50	90 x 1 1/2"	1	15.75
16076K60	90 x 2"	1	15.75
16076L10	110 x 1/2"	1	18.69
16076L20	110 x 3/4"	1	18.69
16076L30	110 x 1"	1	18.69
16076L40	110 x 1 1/4"	1	18.69
16076L50	110 x 1 1/2"	1	18.69
16076L60	110 x 2"	1	18.69
16076M20	125 x 3/4"	1	24.53
16076M30	125 x 1"	1	24.53
16076M40	125 x 1 1/4"	1	24.53
16076M50	125 x 1 1/2"	1	24.53
16076M60	125 x 2"	1	24.53
16076N30	140 x 1"	1	29.53
16076N40	140 x 1 1/4"	1	29.53
16076N50	140 x 1 1/2"	1	29.53
16076N60	140 x 2"	1	29.53
16076P30	160 x 1"	1	41.17
16076P40	160 x 1 1/4"	1	41.17
16076P50	160 x 1 1/2"	1	41.17
16076P60	160 x 2"	1	41.17
16076Q30	180 x 1"	1	59.23
16076Q40	180 x 1 1/4"	1	59.23
16076Q50	180 x 1 1/2"	1	59.23
16076Q60	180 x 2"	1	59.23

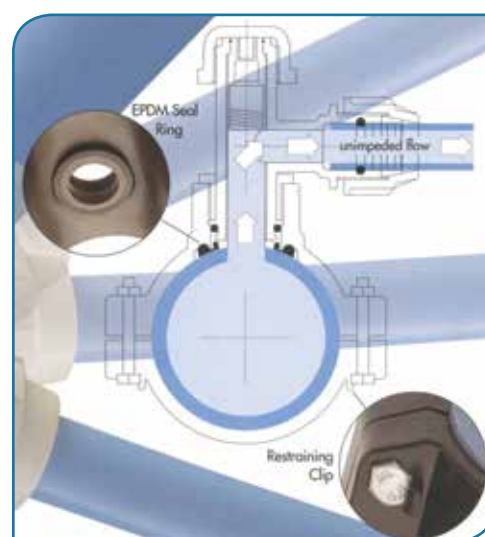
Self-Tapping Swivel Tee

A simple but effective fitting for branch connections from a live mains pipe (63mm-180mm), to 25mm or 32mm supply pipes, the Tapper is suitable for use on metric PE and metric PVC mains pipes.

16540 Tapper for PE/PVC Pipe, Stainless Bolts



Code	d	Bag	£ ea
165400063025	63-25	1	65.90
165400063032	63-32	1	72.18
165400075025	75-25	1	73.36
165400075032	75-32	1	74.48
165400090025	90-25	1	75.29
165400090032	90-32	1	76.67
165400110025	110-25	1	93.20
165400110032	110-32	1	94.53
165400125025	125-25	1	100.97
165400125032	125-32	1	101.87
165400160025	160-25	1	118.87
165400160032	160-32	1	120.24
165400180025	180-25	1	143.45
165400180032	180-32	1	144.72



Key Features

- Use on a live, pressurised mains pipe.
- Suitable for PE and uPVC/MOPVC.
- Outlet can be pointed in required direction before final tightening.
- Large footprint on mains pipe protects PVC from splitting and saddle migration.
- Stainless steel bolts ensures long service life.
- Easy to fit.
- Minimal headloss.
- Can be used as a temporary shut off.

PLASSON pushfit

PLASSON pushfit fittings provide dedicated solutions for connecting PE and other pipe materials such as copper, PB, PEX. This compact and attractive fitting is ideal for the plumbing market, where space is limited and appearance is crucial. WRAS approved and rated to PN16.

1001 Coupler



Code	d	Bag	£ ea
1001U0020	20	5	4.92
1001U0025	25	5	5.30
1001U0032	32	5	12.43
1001U0040	40	1	26.97
1001U0050	50	1	29.52
1001U0063	63	1	44.29

1011 Reducing Coupler



Code	d	Bag	£ ea
1011U0025020	25 x 20	5	9.92
1011U0032020	32 x 20	5	16.79
1011U0032025	32 x 25	5	16.81
1011U0040032	40 x 32	1	28.04
1011U0050025	50 x 25	1	31.45
1011U0050032	50 x 32	1	35.96
1011U0063032	63 x 32	1	46.05
1011U0063050	63 x 50	1	45.24

1001C Coupler PE x Cu/PB/PEX



Code	d	Bag	£ ea
1001CU020015	20 x 15	5	8.59
1001CU025015	25 x 15	5	8.94
1001CU025022	25 x 22	5	9.17
1001CU032028	32 x 28	5	17.17

1001M Coupler Metric to Imperial



Code	d	Bag	£ ea
1001M6020005	20 x 1/2"	5	6.00
1001M6025005	25 x 1/2"	5	6.31
1001M6025007	25 x 3/4"	5	6.73
1001M6032010	32 x 1"	5	13.71



1002 Male Adaptor



Code	d	Bag	£ ea
1002U0020005	20 x 1/2"	5	4.60
1002U0020007	20 x 3/4"	5	4.92
1002U0025005	25 x 1/2"	5	5.53
1002U0025007	25 x 3/4"	5	5.53
1002U0025010	25 x 1"	5	8.59
1002U0032007	32 x 3/4"	5	8.58
1002U0032010	32 x 1"	5	8.58
1002U0032013	32 x 1 1/4"	5	8.58
1002U0040010	40 x 1"	1	16.94
1002U0040013	40 x 1 1/4"	1	16.94
1002U0040015	40 x 1 1/2"	1	16.94
1002U0050015	50 x 1 1/2"	1	21.20
1002U0050020	50 x 2"	1	21.20
1002U0063015	63 x 1 1/2"	1	28.91
1002U0063020	63 x 2"	1	28.91

1002C Male Adaptor to Cu/PB/PEX



Code	d	Bag	£ ea
1002C7015007	15 x 3/4"	5	7.47
1002C7022007	22 x 3/4"	5	7.86
1002C7028010	28 x 1"	5	12.59

1003 Female Adaptor



Code	d	Bag	£ ea
1003U0020005	20 x 1/2"	5	5.34
1003U0025005	25 x 1/2"	5	6.11
1003U0025007	25 x 3/4"	5	5.86
1003U0025010	25 x 1"	5	7.69
1003U0032007	32 x 3/4"	5	7.69
1003U0032010	32 x 1"	5	7.69
1003U0032013	32 x 1 1/4"	5	7.69
1003U0040013	40 x 1 1/4"	1	18.67
1003U0050015	50 x 1 1/2"	1	25.27
1003U0050020	50 x 2"	1	25.27
1003U0063015	63 x 1 1/2"	1	37.56
1003U0063020	63 x 2"	1	37.56

1003C Female Adaptor to Cu/PB/PEX



Code	d	Bag	£ ea
1003C701507	15 x 3/4"	5	9.94
1003C702207	22 x 3/4"	5	10.31

1004 90° Tee



Code	d	Bag	£ ea
1004U0020	20	5	8.16
1004U0025	25	5	13.52
1004U0032	32	5	18.27
1004U0040	40	1	34.88
1004U0050	50	1	38.22
1004U0063	63	1	59.44

1034 90° Reducing Tee



Code	d	Bag	£ ea
1034U0025020	25 x 20 x 25	5	15.41
1034U0032020	32 x 20 x 32	5	20.72
1034U0032025	32 x 25 x 32	5	20.70

1014 90° Tee Female Threaded



Code	d	Bag	£ ea
1014U0020005	20 x 1/2" x 20	5	7.59
1014U0025007	25 x 3/4" x 25	5	11.42
1014U0032010	32 x 1" x 32	5	15.89

1015 90° Female Elbow



Code	d	Bag	£ ea
1015U0020005	20 x 1/2"	5	5.91
1015U0020007	20 x 3/4"	5	5.91
1015U0025005	25 x 1/2"	5	7.85
1015U0025007	25 x 3/4"	5	7.85
1015U0025010	25 x 1"	5	7.85
1015U0032007	32 x 3/4"	5	12.74
1015U0032010	32 x 1"	5	12.74

1085 90° Male Elbow



Code	d	Bag	£ ea
1085U0020005	20 x 1/2"	5	4.46
1085U0020007	20 x 3/4"	5	4.46
1085U0025005	25 x 1/2"	5	5.20
1085U0025007	25 x 3/4"	5	5.20
1085U0025010	25 x 1"	5	5.20
1085U0032007	32 x 3/4"	5	8.76
1085U0032010	32 x 1"	5	8.76
1085U0032013	32 x 1 1/4"	5	8.76
1085U0040013	40 x 1 1/4"	1	16.88
1085U0050015	50 x 1 1/2"	1	23.85
1085U0063020	63 x 2"	1	29.06

1005 90° Elbow



Code	d	Bag	£ ea
1005U0020	20	5	6.11
1005U0025	25	5	9.00
1005U0032	32	5	14.82
1005U0040	40	1	29.38
1005U0050	50	1	31.65
1005U0063	63	1	42.83

1051 90° Reducing Elbow



Code	d	Bag	£ ea
1051U0025020	25 x 20	5	10.21

1005M 90° Elbow Metric to Imperial



Code	d	Bag	£ ea
1005M6025005	25 x 1/2"	5	11.03
1005M6025007	25 x 3/4"	5	10.74

1075 Wall Plate Elbow



Code	d	Bag	£ ea
1075U0020005	20 x 1/2"	1	12.05
1075U0020007	20 x 3/4"	1	12.05
1075U0025005	25 x 1/2"	1	16.07
1075U0025007	25 x 3/4"	1	16.07

1012 End Plug



Code	d	Bag	£ ea
1012U0020	20	5	6.09
1012U0025	25	5	7.80
1012U0032	32	5	11.38
101200040	40	1	19.60
101200050	50	1	24.72
101200063	63	1	36.55

A liner must be used with metric MDPE pipe to ensure conformance with WRAS. See pg13 for 7950 liners. When using PB/PEX pipes, use pipe manufacturers liner.

PLASSON valves



3407 Stop Tap

WRAS approved stop tap for above & below ground use. Body & nut are made from polypropylene, the 'O' ring from high quality NBR.

3407 Stop Tap

Above & Below Ground



Code	d	Bag	£ ea
3407CC0	20	5	26.53
3407DD0	25	5	37.61
3407EE0	32	5	58.25

3405 Stop Tap

Above & Below Ground
FI x FI



Code	d	Bag	£ ea
3405200	3/4"	5	13.09
3405300	1"	5	14.25

3610 Stop Tap Chamber

with plastic lid or cast lid



Code	d	Bag	£ ea
3610	plastic lid	1	36.18
36101	cast lid	1	85.32

- Suitable for 20, 25 & 32mm PLASSON stop taps.
- 750mm guard tube can be cut to length.
- Plastic lid: 1 ton rated (Class C rated).
- Cast iron lid: 5 ton rated (Class B rated).

Components for 3610



Code	d	Bag	£ ea
3612025	750mm tube	1	12.92
3613025	sleeve	1	5.52
3611025	base	1	11.06
3614025	4" surface box plastic	1	10.71
3605001	6" surface box cast	1	57.75

3489 Stop Tap

for Imperial Pipe



Code	d	Bag	£ ea
3489110	1/2"	5	30.51
3489220	3/4"	5	43.25

7509 Stop Tap

Normal Gauge



Code	d	Bag	£ ea
7509205	1/2" x 1/2"	10	25.20
7509257	3/4" x 3/4"	10	30.08

7609 Stop Tap

Heavy Gauge



Code	d	Bag	£ ea
7609205	1/2" x 1/2"	10	25.20
7609257	3/4" x 3/4"	10	30.08

0341 Pushfit Stop Tap

Above & Below Ground



Code	d	Bag	£ ea
0341U0020	20	5	29.18
0341U0025	25	5	41.36
0341U0032	32	5	64.10

0341C Pushfit Stop Tap

PE x Cu/PB/PEX

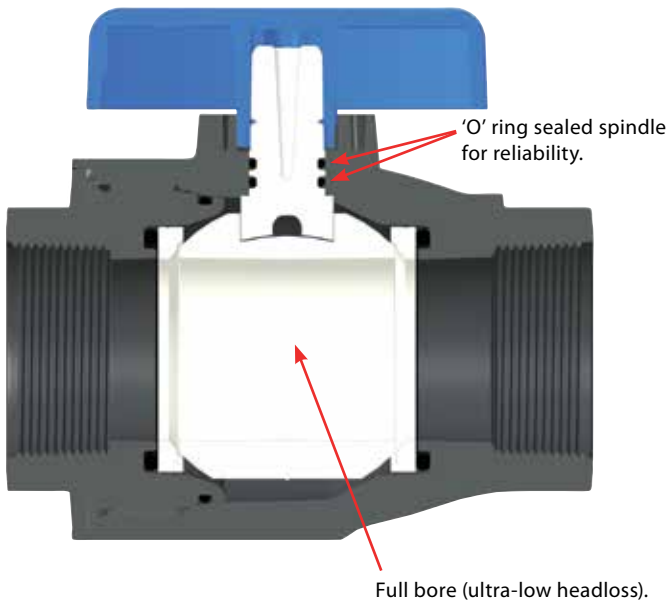
Above Ground Only



Code	d	Bag	£ ea
03410020015	20 x 15	5	37.01
03410025015	25 x 15	5	50.04
03410025022	25 x 22	5	52.21
03410032028	32 x 28	5	73.66



3703 Mains Stop Valve. Above & Below Ground



What is the 3703?

High quality 1/4 turn primary stop valve for water isolation.

WRAS approved?

The 3703 is WRAS approved for the full range. It is the first WRAS approved stop valve for 50mm (1½") and 63mm (2") mains pipe manufactured from non metallic materials.

What is it made from?

Manufactured from glass reinforced polyamide, the 3703 now provides an alternative solution to the traditionally used gunmetal and dZR stop valves.

Suitable for contaminated ground? (BS8588)

Yes, BS8588:2017 approved - the new standard for products for use in contaminated ground, at all sizes.

Drain/Test Ports?

A version is available which has drain/test ports on one end of the valve (for above ground use only).

3703 Mains Stop Valve Above & Below Ground FI x FI



Code	d	dn	Bag	£ ea
370300007	3/4"	20	1	41.90
370300010	1"	25	1	49.61
370300013	1 1/4"	32	1	59.54

3703 Mains Stop Valve Above & Below Ground FI x FI



Code	d	dn	Bag	£ ea
370300015	1 1/2"	40	1	71.66
370300020	2"	50	1	104.74

3703 Mains Stop Valve Above & Below Ground FI x FI



Code	d	dn	Bag	£ ea
370300050	50mm	40	1	109.81
370300063	63mm	50	1	155.85

3703 Mains Stop Valve c/w Drain / Test Ports Above Ground Only FI x FI



Code	d	dn	Bag	£ ea
37030F007	3/4"	20	1	52.92
37030F010	1"	25	1	60.64
37030F013	1 1/4"	32	1	71.66
37030F015	1 1/2"	40	1	79.38
37030F020	2"	50	1	121.28



9048 Universal Stop Tap DZR

Above & Below Ground



Internal 1 1/2" FI thread
External 2" MI thread



Code	d	Bag	£ ea
9048	1 1/2" FI / 2" MI	1	276.84
9048A	50	1	323.75
9048A63	63	1	335.82

BS5433 Valves

9053 Stop Tap Gun Metal

BS5433 FI x FI



Code	d	Bag	£ ea
9053100	1/2"	1	34.13
9053200	3/4"	1	77.64
9053300	1"	1	84.01
9053500	1 1/2"	1	307.03
9053600	2"	1	426.43

9050 Universal Stop Tap DZR

Above & Below Ground



Code	d	Bag	£ ea
9050020	20	1	50.32
9050025	25	1	63.54
9050032	32	1	133.05

9051 Universal Stop Tap DZR

Above & Below Ground
Square Drive



Code	d	Bag	£ ea
9051528	20	1	50.32
9051529	25	1	63.54
9051530	32	1	133.05

WIS 4-23-04 Valves

9061 Plug Tap DZR

WIS 4-23-04 Type



Code	d	Bag	£ ea
9061DD0	25	1	89.27
9061EE0	32	1	116.15

Polymer Ball Valves

1379 Ball Valve PVC

PE x FI



Code	d	Bag	£ ea
13791C0	20 x 1/2"	1	21.86
13792D0	25 x 3/4"	1	25.11
13793E0	32 x 1"	1	33.87
13794F0	40 x 1 1/4"	1	40.80
13795G0	50 x 1 1/2"	1	55.57
13796H0	63 x 2"	1	98.60

1151 Ball Valve PVC

Double Union FI x FI



Code	d	Bag	£ ea
1151000	3/8"	1	21.72
1151110	1/2"	1	21.72
1151200	3/4"	1	23.31
1151300	1"	1	29.04
1151400	1 1/4"	1	30.47
1151500	1 1/2"	1	50.19
1151600	2"	1	68.15
1151770	2 1/2"	1	178.40
1151880	3"	1	236.36
1151900	4"	1	298.85

1300 Ball Valve PVC

Economy FI x FI



Code	d	Bag	£ ea
1300110	1/2"	1	3.30
1300220	3/4"	1	4.35
1300330	1"	1	6.14
1300440	1 1/4"	1	9.06
1300550	1 1/2"	1	12.26
1300660	2"	1	16.04

2099 Arctic Ball Valve

Ice Resistant

FI x FI



Code	d	Bag	£ ea
2099001	1/2"	1	21.33
2099002	3/4"	1	26.05
2099003	1"	1	37.86

Valves for welding (Electrofusion connection)

43620 EF Ball Valve PE

Double Spigot

(In accordance with
BSEN12201 & BSEN1555)



Code	d	Bag	£ ea
436207025	25	1	160.53
436207032	32	1	148.64
436207040	40	1	185.22
436207050	50	1	222.26
436207063	63	1	234.62
436207075	75	1	246.96
436207090	90	1	432.20
436207110	110	1	493.94
436207125	125	1	555.69
436207160	160	1	893.00

For operating key see pg32

1148 Ball Valve EF PVC

Double Spigot



Code	d	Bag	£ ea
1148020	20	1	28.83
1148025	25	1	31.00
1148032	32	1	35.51
1148040	40	1	45.32
1148050	50	1	55.07
1148063	63	1	68.19

1378 Ball Valve EF PVC

PE x Single Spigot



Code	d	Bag	£ ea
1378020	20	1	21.79
1378025	25	1	23.53
1378032	32	1	27.44
1378040	40	1	37.20
1378050	50	1	46.35
1378063	63	1	69.51

Quick Coupling Valve & Key

Simple, Quick & Easy



What is it?

A PLASSON valve which allows temporary access to a water sprinkler system with the use of a valve key.

What is it made from?

Body: polypropylene and acetal

Spring: stainless steel

Seals: NBR

Where is it used?

Livestock watering systems, sprinkler irrigation systems, landscaping irrigation.

Easy to use

- Single action snap-in-key opens valve for water flow into hose/sprinkler. Just snap key in place at the desired fixed valve position, and you're ready to go. No turning water mains on and off.
- Easy release of key, automatically shuts valve.
- Time and money saving.
- Highly durable and reliable.



3039 Quick Coupling Valve & Key



Code	d	Bag	£ ea
3039200	3/4" Valve	1	20.23
3039300	1" Valve	1	20.23
3139200	Valve Key	1	8.52

Check Valves (WRAS)

9077 Double Check Valve DZR

FI x FI



Code	d	Bag	£ ea
9077100	1/2"	1	25.71
9077200	3/4"	1	53.32
9077300	1"	1	93.71
9077500	1 1/2"	1	229.25
9077600	2"	1	296.85

9078 Single Check Valve DZR

FI x FI



Code	d	Bag	£ ea
9078500	1 1/2"	1	108.48
9078600	2"	1	140.47

Check Valves (Non WRAS)

9057 Double Check Valve DZR

FI x FI (Non WRAS)



Code	d	Bag	£ ea
9057100	1/2"	1	10.51
9057200	3/4"	1	18.36
9057300	1"	1	24.95

1061 Non Return Valve PVC

FI x FI



Code	d	Bag	£ ea
1061000	3/8"	1	35.95
1061100	1/2"	1	36.07
1061200	3/4"	1	44.48
1061300	1"	1	50.57
1061400	1 1/4"	1	63.59
1061500	1 1/2"	1	92.93
1061600	2"	1	130.28

1631 Air Release Valve PVC

Vertically Mounted

FI x FI



Code	d	Bag	£ ea
1631000	3/8"	1	35.95
1631100	1/2"	1	36.07
1631200	3/4"	1	44.48
1631300	1"	1	50.57
1631400	1 1/4"	1	63.59
1631500	1 1/2"	1	92.93
1631600	2"	1	130.28

9095 PRV & Gauge

1/2" FI / 3/4" MI



Code	d	Bag	£ ea
9095	3/4" - 1/2"	1	88.22

3047 Angle Seat Valve PP

MI x MI



Code	d	Bag	£ ea
3047100	1/2"	1	14.19
3047200	3/4"	1	15.83
3047300	1"	1	18.77
3047400	1 1/4"	1	53.31
3047500	1 1/2"	1	59.79
3047600	2"	1	73.96

3048 Angle Seat Valve PP

PE x MI Thread



Code	d	Bag	£ ea
30481C0	20 x 1/2"	1	17.25
30482D0	25 x 3/4"	1	17.57
30483E0	32 x 1"	1	21.57
30484F0	40 x 1 1/4"	1	63.18
30485G0	50 x 1 1/2"	1	69.95
30486H0	63 x 2"	1	87.84

9056 Bib Tap Hose Union DZR
c/w Double Check Valve



Code	d	Bag	£ ea
9056C00	1/2"	1	13.98
9056D00	3/4"	1	37.86

9076 Bib Tap Hose Union DZR



Code	d	Bag	£ ea
9076100	1/2"	1	9.47
9076200	3/4"	1	23.10

9070 Bib Tap DZR
Lockshield BS1010



Code	d	Bag	£ ea
9070100	1/2"	1	24.95

9071 Bib Tap DZR
Lockshield BS1010
with Check Valve



Code	d	Bag	£ ea
9071100	1/2"	1	49.76

2100 Arctic Ice Resistant
Bib Cock



Code	d	Bag	£ ea
2100001	1/2"	1	21.33
2100003	3/4"	1	32.76
2100004	1"	1	48.20

2100 Bib Cock
Lever Handle



Code	d	Bag	£ ea
2100005	1/2"	1	10.31
2100007	3/4"	1	18.95

7750 Wall Plate Elbow PP



Code	d	Bag	£ ea
7750C10	20 x 1/2"	5	11.26
7750D20	25 x 3/4"	5	15.02

1075 Pushfit Wall Plate Elbow PP



Code	d	Bag	£ ea
1075U0020005	20 x 1/2"	1	12.05
1075U0020007	20 x 3/4"	1	12.05
1075U0025005	25 x 1/2"	1	16.07
1075U0025007	25 x 3/4"	1	16.07

9055 Wall Plate Elbow DZR



Code	d	Bag	£ ea
9055C10	20 x 1/2"	1	24.47
9055D20	25 x 3/4"	1	30.70

1000 Wall Plate Elbow



Code	d	Bag	£ ea
1000C10	20 x 1/2"	1	14.39
1000D10	25 x 1/2"	1	15.29
1000D20	25 x 3/4"	1	19.06



PLASSON metering



3513/4 Standard

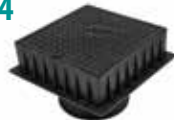


Code	d	Bag	£ ea
3513	c/w cast lid	1	142.78
3514	c/w plastic lid	1	109.73

3513 Key Features

- 650mm guard tube can be cut to length.
- Plastic lid: 1 ton rated (Class C rated).
- Cast iron lid: 5 ton rated (Class B rated).
- Includes 3511 stop valve and meter mount.
- Metric PE inlet/outlet pipe connection.
- Adapters available for barrier pipe connection.
- 'O' ring sealed joints.
- Tough all polypropylene construction.
- Accepts all standard 15mm concentric meters.

Components for 3513/4



Code	d	Bag	£ ea
3602001	650mm guard tube	1	20.59
3607001	foam insulation plug	1	3.26
3513A	meter box base	1	9.83
3605001	6" surface box cast	1	57.75
3615025	9" surface box plastic	1	29.66

3543 Adjustable

25mm pushfit for connection. Height adjustable 500mm - 800mm.



Code	d	Bag	£ ea
3543	25	1	142.78

3511 Concentric Meter Mount Kit Below Ground - No Drain Off



Code	d	Bag	£ ea
3511015	25	1	58.15

3511 Key Features

- Adapters available for barrier pipe connection.
- Accepts all standard 15mm concentric meters.
- 'O' ring sealed joints.
- Tough all polypropylene construction.
- Metric PE inlet pipe connection.
- Metric PE outlet pipe connection.



3544 Adjustable for Contaminated Land

Brass 3/4" threaded connection. Height adjustable 500mm - 800mm.



Code	d	Bag	£ ea
3544	3/4"	1	245.43

Many water meter connections are now required inside domestic properties (replacing the traditional boundary box / underground position). For a single housing unit, a standard meter manifold requires a drain port to be incorporated into the assembly. The PLASSON 3517/8 range provides a simple solution incorporating a stop tap and drain off point.



3517 Concentric Meter Mount Kit

Internal - with Drain Off



Code	d	Bag	£ ea
3517015	25 x 15	1	90.17
3517022	25 x 22	1	90.17
3518022	22 x 22	1	95.09

Key Features

- Metric PE or Cu/PB/PEX inlet pipe connection.
- 'O' ring sealed joints.
- Built in drain valve.
- Cu/PB/PEX outlet pipe connection.
- Adapters available for barrier pipe connection.
- Tough all polypropylene construction.
- Accepts all standard 15mm concentric meters.

3510 Meter Mount

Internal with drain off
15mm copper
connection only



Code	d	Bag	£ ea
3510015	15 x 15	1	39.86

Key Features

- 15mm copper inlet/outlet pipe connection.
- Built in drain valve.
- Tough all polypropylene construction.
- Accepts all standard 15mm concentric meters.

Positive displacement concentric water meter

The Gladiator is a positive displacement water meter, rotating piston type. The flowing water causes the piston to rotate within its chamber, each piston revolution being equivalent to a known volume of water. The piston movement is transferred by a magnetic coupling to the register which has the appropriate reduction gearing.

9001 Concentric Water Meter

1 1/2" BSP

Code	Nominal Size	Nominal Flow Rate (m ³ /h)	£ ea
9001	15mm	1.6	125.37



Applications

Wholesome (potable) water

Standards/Specification

- ISO 4064 (class D), BS-EN 14154, WRAS.
- EEC metrological requirements, MID 2004/22/EC.
- Maximum Working Pressure: **16 bar**.
- Maximum Working Temperature: **50°C**.
- Body: **Highly reinforced composite material**.

Features

- Specially designed for high accuracy & wide measuring range.
- Sealed super-dry register.
- IP68 Pulse under the glass register.

Installation Requirements

The meter can be installed in any position (horizontal, vertical or inclined). The meter must be always full of water while operating.

Prior to the installation of a new meter, the pipeline must be flushed out.

Multiport manifolds

For chamber (below ground) and above ground use

3524 Manifold 2" Centre feed

Code	d	Bag	£ ea
3524004	4 Port x 25mm	1	395.79
3524006	6 Port x 25mm	1	438.44



3523 Manifold 2" End feed

Code	d	Bag	£ ea
3523003	3 Port x 25mm	1	385.78
3523004	4 Port x 25mm	1	442.49
3523006	6 Port x 25mm	1	499.19



3534 Dead Leg Kit

for use with End Connection Manifold

Code	d	£ ea
3534000	dead leg plug kit for end feed 2"	53.04



Meter Connections for Multi Use Buildings

Water supply connection to multi-use buildings requires several components to meet water company requirements / regulations. The multiport manifolds above can be used in conjunction with the meter mount kits and other PLASSON components to ensure the installation meets the required standards / approvals.

Meter mount kits

3535/6 Meter Mount Kit A/B

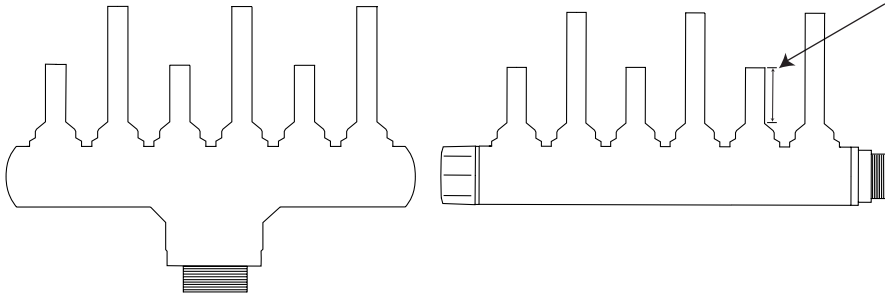
A - Connection to 22mm Cu/PB/PEX
B - Connection to 25mm MDPE

Code	d (mm)	Bag	£ ea
3535001	25 x 22	1	129.44
3536001	25 x 25	1	132.88



How to build a multiport manifold

1 One of these: Centre feed or an End feed manifold



To allow stagger between meters, alternate tails require cutting back to minimum 70mm, recommended 100mm length.

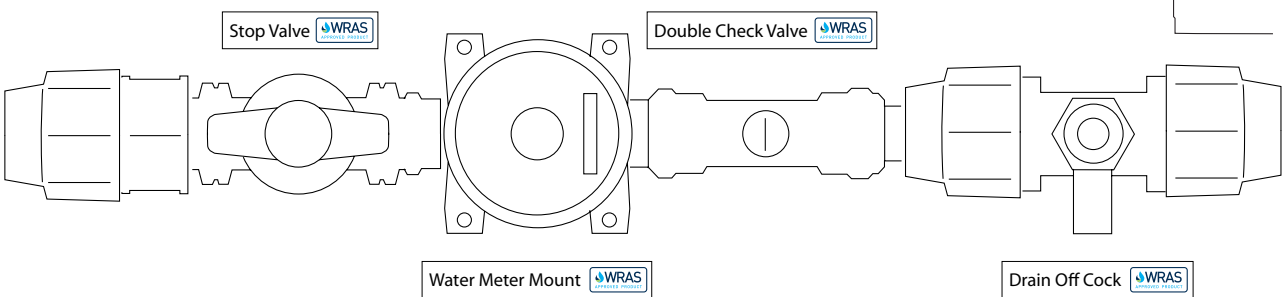
Centre feed manifolds available in 4 and 6 port. End feed manifolds available in 3, 4 and 6 port and can be screwed together to give configuration required.

2 One of these: Dead Leg Kit



A dead leg kit is required only if you need to close the end of an end feed manifold.

3 Several of these: Meter Mount Kit A and/or a Kit B



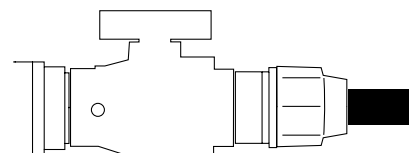
Kit A has a 22mm outlet (for copper/PB/PEX), a Kit B has a 25mm outlet for PE, or an adaptor can be fitted to connect to alternative pipes.

Connection from the manifold for each individual supply requires several components to be included to meet water company requirements / regulations. Water meter mounts are supplied with a temporary cap to enable commissioning, prior to the fitting of the water meter.

The meter mount kit can either be fitted directly to the multiport manifold or placed in the supply line at a convenient location. Using the meter mount kit ensures all the necessary components are installed and of the required standard / approvals.

4 One of each of these: Mains Stop Valve & Male Adaptor

The manifold should be isolated on the incoming main. The 3703 valve is the ideal solution. Available with or without a drain/test port. (See pg19). The 7020 adaptor is required to connect either the valve or the manifold to the incoming main.



PLASSON threaded

A range of quality BSP threaded fittings made from Polypropylene and rated to 16 bar. Ideal replacement for gunmetal and bronze that will not corrode. We recommend the use of PTFE tape on all threaded fittings (see pg 33).

5017 Threaded Socket



Code	d	Bag	£ ea
5017110	1/2"	10	2.22
5017220	3/4"	10	3.24
5017330	1"	10	4.04
5017440	1 1/4"	10	4.43
5017550	1 1/2"	10	5.17
5017660	2"	5	11.56
5017880	3" (PVC)*	1	28.10

5067 Threaded Nipple



Code	d	Bag	£ ea
5067110	1/2"	10	1.85
5067220	3/4"	10	2.07
5067330	1"	10	2.45
5067440	1 1/4"	10	3.74
5067550	1 1/2"	10	4.91
5067660	2"	5	7.26
5067880	3" (PVC)*	1	21.56

5117 Threaded Reducing Socket



Code	d	Bag	£ ea
5117210	3/4" x 1/2"	10	2.66

5065 Reducing Nipple



Code	d	Bag	£ ea
5065210	3/4" x 1/2"	10	2.07
5065310	1" x 1/2"	10	2.45
5065320	1" x 3/4"	10	2.45
5065410	1 1/4" x 1/2"	10	3.74
5065420	1 1/4" x 3/4"	10	3.74
5065430	1 1/4" x 1"	10	3.74
5065510	1 1/2" x 1/2"	10	4.91
5065520	1 1/2" x 3/4"	10	4.91
5065530	1 1/2" x 1"	10	4.91
5065540	1 1/2" x 1 1/4"	10	4.91
5065610	2" x 1/2"	5	7.26
5065620	2" x 3/4"	5	7.26
5065630	2" x 1"	5	7.26
5065640	2" x 1 1/4"	5	7.26
5065650	2" x 1 1/2"	5	7.26

5077 Threaded Cap



Code	d	Bag	£ ea
5077100	1/2"	10	1.55
5077200	3/4"	10	1.66
5077300	1"	10	2.25
5077400	1 1/4"	10	2.66
5077500	1 1/2"	10	4.04
5077600	2"	10	5.75

5177 Threaded Plug



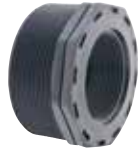
Code	d	Bag	£ ea
5177000	3/8"	10	1.47
5177100	1/2"	10	1.55
5177200	3/4"	10	1.66
5177300	1"	10	2.26
5177400	1 1/4"	10	2.66
5177500	1 1/2"	5	4.04
5177600	2"	5	6.36

5047 90° Threaded Tee



Code	d	Bag	£ ea
5047111	1/2"	10	3.36
5047222	3/4"	10	3.68
5047333	1"	10	5.43
5047444	1 1/4"	5	7.90
5047555	1 1/2"	5	9.28
5047666	2"	5	10.14

5027 Reducing Bush



Code	d	Bag	£ ea
5027100	1/2" x 3/8" (PVC)*	10	2.13
5027200	3/4" x 3/8" (PVC)*	10	2.17
5027210	3/4" x 1/2"	10	2.07
5027310	1" x 1/2"	10	2.26
5027320	1" x 3/4"	10	2.26
5027410	1 1/4" x 1/2"	10	2.92
5027420	1 1/4" x 3/4"	10	2.92
5027430	1 1/4" x 1"	10	2.92
5027510	1 1/2" x 1/2"	10	3.56
5027520	1 1/2" x 3/4"	10	3.56
5027530	1 1/2" x 1"	10	3.56
5027540	1 1/2" x 1 1/4"	10	3.56
5027610	2" x 1/2"	5	5.51
5027620	2" x 3/4"	5	5.51
5027630	2" x 1"	5	5.51
5027640	2" x 1 1/4"	5	5.51
5027650	2" x 1 1/2"	5	5.51
5027760	2 1/2" x 2"	5	7.41
5027830	3" x 1"	2	12.04
5027840	3" x 1 1/4"	2	12.04
5027850	3" x 1 1/2"	2	12.04
5027860	3" x 2"	2	12.04
5027870	3" x 2 1/2"	2	12.04
5027960	4" x 2"	2	12.16
5027980	4" x 3"	2	12.16

5057 90° Threaded Elbow



Code	d	Bag	£ ea
5057110	1/2"	10	2.54
5057220	3/4"	10	3.36
5057330	1"	10	4.18
5057440	1 1/4"	5	5.81
5057550	1 1/2"	5	6.67
5057660	2"	5	8.40

5157 Male/Female Threaded Elbow



Code	d	Bag	£ ea
5157110	1/2"	10	2.82
5157220	3/4"	10	3.49
5157330	1"	10	4.31

* PVC items PN10

5169 PP Tank Connector



Code	d	Bag	£ ea
5169055	1/2"	1	7.55
5169077	3/4"	1	8.94
5169110	1"	1	10.19
5169150	1 1/2"	1	16.03
5169220	2"	1	23.91

5168 PVC Tank Connector



Code	d	Bag	£ ea
5168200	25 x 3/4"	1	15.90
5168300	32 x 1"	1	23.19

5167 Threaded Riser



Code	d	Bag	£ ea
5167110	1/2"	10	2.92
516721M	3/4" x 1/2"	10	3.86
5167220	3/4"	10	3.86
5167330	1"	10	6.25
5167440	1 1/4"	5	6.55
5167540	1 1/2" x 1 1/4"	5	7.09
5167550	1 1/2"	5	7.09

5361 Male Hose Adaptor (PVC)



Code	d	Bag	£ ea
5361100	1/2" BSP x 20mm NB	20	2.56
5361200	3/4" BSP x 25mm NB	10	3.18
5361300	1" BSP x 30mm NB	10	3.36
5361600	2" BSP x 60mm NB	1	7.53

5362 Female Hose Adaptor (PVC)



Code	d	Bag	£ ea
5362200	3/4" FEM x 16mm NB	20	6.59
5362300	1" FEM x 20mm NB	10	6.59

PLASSON repair clamps

The PLASSON range of Repair Clamps are designed to repair water mains pipes where corrosion or mechanical damage has caused leakage. The clamps materials are selected to give maximum service life and are designed for ease of use. All materials meet the requirements of WRAS and DWI Reg 31 for use on potable water systems.

Stainless Steel Repair Clamps

- PN16 pressure rating.
- Stainless steel construction with ductile clamping jaws.
- Wrap around design.
- Can be used on live mains.
- Excellent tolerance range.
- Wide size range available.
- Light and easy to handle.
- Cost effective.
- Waffle type seal.
- Captive bolts with nuts that do not require removal to use the clamp.
- Design reduces the size of excavation required.

6800 Repair Clamp Stainless (76mm - 1 bolt)



Code	d	Bag	£ ea
6800200	21-25 x 76	1	12.03
6800300	26-30 x 76	1	13.52
6800400	33-37 x 76	1	14.29
6800500	42-45 x 76	1	14.55
6800600	48-51 x 76	1	14.94
6800700	60-65 x 76	1	24.53

6800 Repair Clamp Stainless (300mm - 4 bolt)



Code	d	Bag	£ ea
6800110	210-223 x 300	1	248.33
6800120	222-234 x 300	1	250.23
6800130	243-255 x 300	1	269.29
6800140	273-285 x 300	1	368.07
6800150	285-297 x 300	1	368.07

6800 Repair Clamp Stainless (200mm - 3 bolt)



Code	d	Bag	£ ea
6800750	78-88 x 200	1	127.20
6800800	88-98 x 200	1	132.45
6800850	92-103 x 200	1	139.42
6800875	108-118 x 200	1	142.36
6800900	114-126 x 200	1	145.01
6800100	168-182 x 200	1	168.55

Materials Chart

Component	Materials
Clamp Shell	Stainless Steel AISI 304 18.8
Clamp Jaws	EN-GJS-400-15 acc. to UNI EN 1563 norms
Waffle seal	EPDM APE 55N Shore 53 + or -5 WRAS approved material
Bolts	High Tensile Steel, Galvanised M14 (multi bolt)

Ductile Iron Repair Clamps

- PN16 pressure rating.
- Made from ductile iron with epoxy coating and stainless bridging plates.
- Two part body separates so it can be used without cutting the pipe.
- Excellent tolerance range.
- Extremely strong and durable.
- Cost effective.
- Captive bolts with heads retained in recesses.
- Only one tool required for tightening.
- Waffle type seal ensuring optimum seal.
- Innovative design reduces the size of the excavation required.

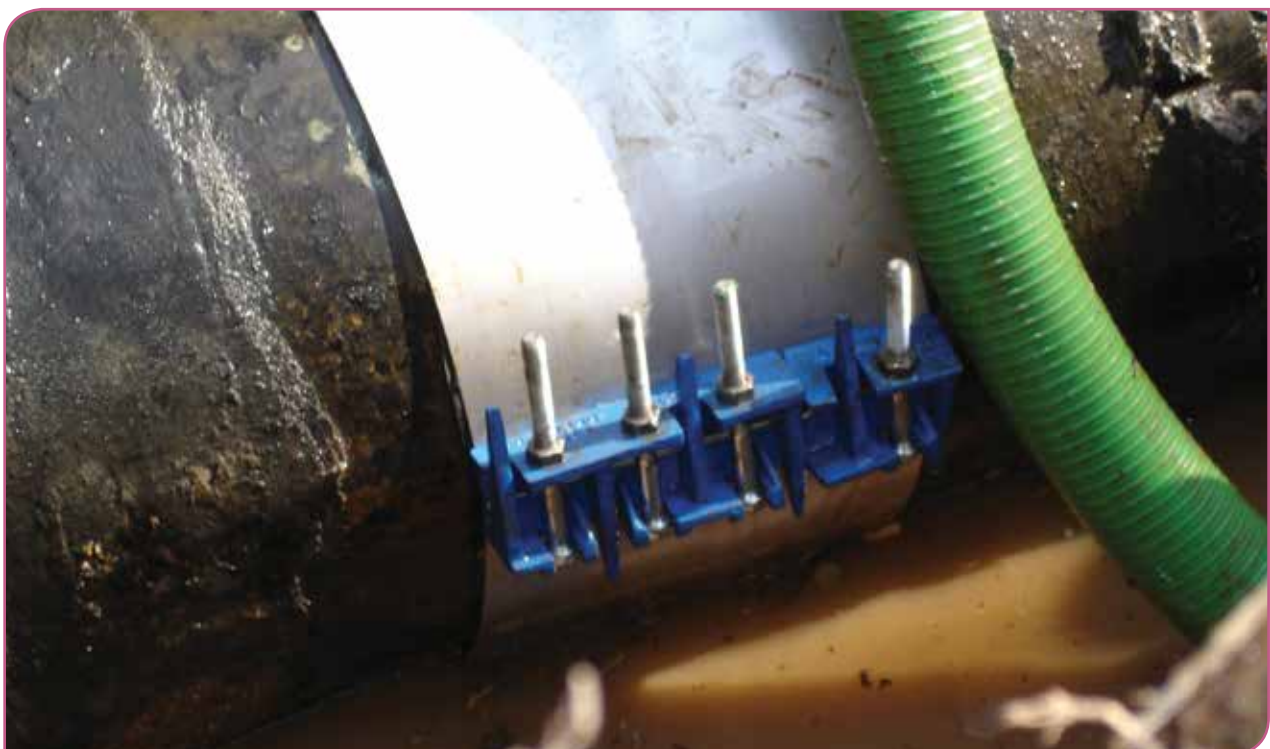
6801 Repair Clamp Ductile Iron (200mm - 4 bolt)



Code	d	Bag	£ ea
6801B00	92-103 x 200	1	182.47
6801CC00	115-125 x 200	1	193.67
6801D00	141-154 x 200	1	205.87
6801E00	166-181 x 200	1	222.47
6801F00	216-226 x 200	1	381.86

Materials Chart

Component	Materials
Clamp Body	Ductile Iron GJS 400-15 UNI EN 1563
Clamp Coating	PPA 571 ES Blue 536
Bridging Plates	Stainless Steel AISI 304 18.8
Waffle Seal	EPDM APE 55N Shore 53 + or -5 WRAS approved material
Bolts	High Tensile Steel, Galvanised M12 and M16



PLASSON tools/accessories

7960 Chamfer Tool



Code	d	Bag	£ ea
7960010	20-63	1	80.68

60125 Pipe Shears



Code	d	Bag	£ ea
60125	20-32	1	47.53
60126	20-63	1	114.28

60123 Pipe Squeeze Tool



Code	d	Bag	£ ea
60123	16-32	1	65.31
60123A	32-63	1	109.66

60124 Water Valve Key Universal



Code	d	Bag	£ ea
60124		1	50.13

1247 EF Hand Scraper



Code	d	Bag	£ ea
1247	1 1/2"	1	38.44
1248	2 1/2"	1	55.32

7990 Mechanical Wrench for PLASSON mechanical fittings



Code	d	Bag	£ ea
7990BJ0	16-40	1	7.64
7990FJ0	40-75	1	48.04
7990GL0	63-125	1	66.37

1099 Pushfit Wrench for PLASSON pushfit fittings



Code	d	Bag	£ ea
10990004P	20-32	1	29.20
10990002P	40-63	1	50.41

7992 Strap Wrench Universal



Code	d	Bag	£ ea
7992001	20-90	1	40.01

7991 Tapper Assembly Tool for use with 16540 & 49630



See pg15 & pg49

Code	d	Bag	£ ea
7991001		1	58.02

4363 Operating Key for use with EF Ball Valve 43620



See pg21

Code	d	Bag	£ ea
4363			91.90

60120 Pipe Clip Metric Pushfix



Code	d	Tub	£ ea
60120C00	20	100	0.47
60120D00	25	100	0.50
60120E00	32	100	0.59
60120G00	50	50	1.06
60120H00	63	50	1.18

6000 PTFE Tape



Code	d	Carton	£ ea
6000		1	1.17

F80 Silicone Grease Lubricant (WRAS)



Code	d	Container	£ ea
F8029	30ml (tub)	1	9.07
F8030	500ml (spray)	1	21.83

6101 Protective Tapes



Code	d	Bag	£ ea
6101 (aluminium)	50 x 45m	1	26.41
6102 (waterproof)	50 x 10m	1	17.17
6103 (petrolatum)	50 x 10m	1	15.46

4899 EF Wipes Tub



Code	d	Bag	£ ea
4899		1	32.81

4902A Marker Pen



Code	d	Bag	£ ea
4902A		1	8.66

4897 Hand Wipes



Code	d	Tub	£ ea
4897		1	30.85

4898 Hand Cleaner



Code	d	Tub	£ ea
4898		1	19.44



Irish Standard to metric/universal

IS134 Normal Gauge (red grip ring)

7518 Coupler Normal x Metric



Code	d	Bag	£ ea
7518205	1/2" x 20	10	4.46
7518255	1/2" x 25	10	6.81
7518257	3/4" x 25	10	5.15
7518321	1" x 32	5	9.54

7578 90° Elbow Normal x Metric



Code	d	Bag	£ ea
7578205	1/2" x 20	10	5.41
7578207	1/2" x 25	10	9.88
7578255	3/4" x 20	10	7.68
7578257	3/4" x 25	10	7.40
7578321	1" x 32	5	12.61

7508 Coupler Normal x Heavy



Code	d	Bag	£ ea
7508205	1/2" x 1/2"	10	5.30
7508210	1/2" x 3/4"	10	10.77
7508257	3/4" x 3/4"	10	5.97

IS134 Heavy Gauge (light blue grip ring)

7618 Coupler Heavy x Metric



Code	d	Bag	£ ea
7618205	1/2" x 20	10	4.46
7618255	1/2" x 25	10	6.81
7618257	3/4" x 25	10	5.15
7618321	1" x 32	5	9.54

7678 90° Elbow Heavy x Metric



Code	d	Bag	£ ea
7678205	1/2" x 20	10	5.41
7678255	1/2" x 25	10	9.88
7678257	3/4" x 25	10	7.40
7678321	1" x 32	5	12.61

77017 Plass4 Universal Coupler to Heavy Gauge



Code	d	Bag	£ ea
070176005022	1/2" HG x 15-22mm	1	14.53
070176005027	1/2" HG x 20-27mm	1	18.28
070176005035	1/2" HG x 27-35mm	1	22.88

Irish Copper Adaptor

For connection to Irish copper, use the 7438 adaptor in a metric PLASSON mechanical fitting.

7438 Copper Adaptor table X & Y



Code	d	Bag	£ ea
7438017	25 x 1/2" IRS	10	5.72
7438021	25 x 3/4" IRS	10	5.42
7438028	32 x 1" IRS	10	8.11

Irish Copper Pipe sizes

Nominal Size mm	Min OD mm
1/2"	14.7
3/4"	21.0
1"	27.4

Dedicated Irish Normal Gauge (red grip ring) & Heavy Gauge (blue grip ring)

7501/7601 Coupler



NG	HG	d	Bag	£ ea
7501205	7601205	1/2"	10	5.30
7501210	7601210	3/4" x 1/2"	10	10.07
7501257	7601257	3/4"	10	5.97
7501321	7601321	1"	10	11.73

7505/7605 90° Elbow



NG	HG	d	Bag	£ ea
7505205	7605205	1/2" x 1/2"	10	6.55
7505257	7605257	3/4" x 3/4"	10	8.67
7505321	7605321	1" x 1"	5	13.15

7504/7604 90° Tee



NG	HG	d	Bag	£ ea
7504205	7604205	1/2" x 1/2" x 1/2"	10	8.49
7504212	7604212	3/4" x 1/2" x 3/4"	10	11.99
7504257	7604257	3/4" x 3/4" x 3/4"	10	11.95
7504321	7604321	1" x 1" x 1"	5	18.87
7504323	7604323	1" x 3/4" x 1"	5	18.87

7509/7609 Stop Tap



NG	HG	d	Bag	£ ea
7509205	7609205	1/2" x 1/2"	10	25.20
7509257	7609257	3/4" x 3/4"	10	30.08

7538/7638 Female Adaptor



NG	HG	d	Bag	£ ea
7538205	7638205	1/2" x 1/2" FI	10	5.30
7538210	7638210	1/2" x 3/4" FI	10	4.64
7538257	7638257	3/4" x 3/4" FI	10	5.08
7538321	7638321	1" x 1" FI	5	7.00

7528/7628 Male Adaptor



NG	HG	d	Bag	£ ea
7528205	7628205	1/2" x 1/2" MI	10	4.17
	7628207	1/2" x 3/4" MI	10	5.43
	7628210	3/4" x 1" MI	10	7.27
	7628251	1" x 3/4" MI	10	7.27
7528255	7628254	3/4" x 1/2" MI	10	4.97
7528257	7628257	3/4" x 3/4" MI	10	4.65
7528321	7628321	1" x 1" MI	5	7.27

7579/7679 90° Female Elbow



NG	HG	d	Bag	£ ea
7579110	7679110	1/2" x 1/2"	10	5.49
7579220	7679220	3/4" x 3/4"	10	5.80
7579330	7679330	1" x 1"	5	8.32

7506/7606 Wall Plate Elbow



NG	HG	d	Bag	£ ea
7506205	7606205	1/2" x 1/2"	10	9.95
7506257		3/4" x 3/4"	10	14.29

Pipe Diameter Guide for Normal & Heavy Gauge IS134

Pipe	O.D.	1/2"	3/4"	1"	1 1/4"	1 1/2"
Normal Gauge	Max	17.30	25.40	31.75	38.10	44.45
	Min	16.94	24.94	31.24	37.52	43.82
Heavy Gauge	Max	21.10	27.45	34.25	42.65	48.65
	Min	20.70	27.05	33.85	42.00	47.95



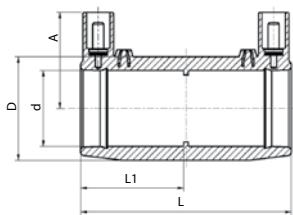
PLASSON electrofusion

PLASSON electrofusion fittings are specifically designed for reliable, high performance pipe joining and long system life. All fittings are BS EN 12201 and BS EN 1555 approved and are fitted with 4.0mm pins. PLASSON electrofusion fittings can be used with PLASSON's computerised SmartFuse System control box, Fusamatic control boxes, barcode reading and by manual control boxes.

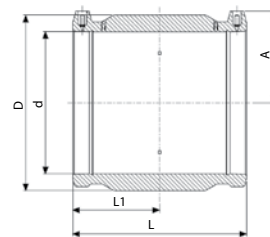
490104 EF Coupler PN16



20mm up to 75mm

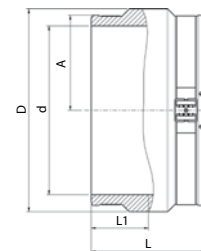


90mm up to 400mm



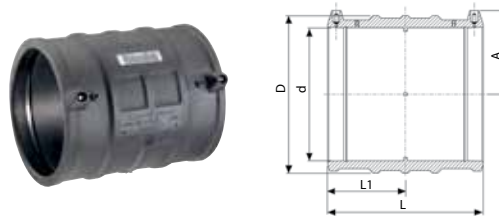
Code	£ ea	Size d	L	L1	D	A	W	Box Qty
490104020	7.47	20	76	37	31	34	50	440
490104025	7.47	25	82	40	36	37	40	360
490104032	7.47	32	88	42	44	42	63	256
490104040	11.18	40	97	47	56	46	97	200
490104050	11.51	50	101	49	67	51	147	132
490104063	13.84	63	117	57	82	57	230	72
490104075	21.24	75	126	61	98	64	340	60
490104090	21.43	90	148	73	112	71	566	38
490104110	32.85	110	163	80	135	81	718	23
490104125	37.64	125	173	85	157	87	1075	18
490104140	48.28	140	183	90	174	97	1295	12
490104160N	58.86	160	195	93	194	105	1550	6
490104180N	69.45	180	212	105	218	116	2112	5
490104200N	98.55	200	223	109	242	126	2785	4
490104225N	111.75	225	240	119	272	138	3900	4
490104250	161.01	250	251	123	311	156	4461	2
490104280	243.62	280	275	134	340	170	6440	1
490104315	270.01	315	282	139	387	184	8845	1
490104355	493.61	355	277	137	431	203	10200	1
490103400	539.74	400	293	145	485	231	13800	1

490103 EF Coupler PN16 Large Diameter



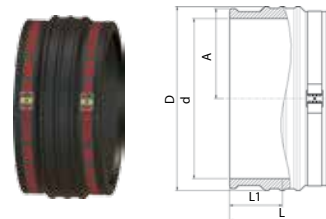
Code	£ ea	Size d	L	L1	D	A	W	Box Qty
490103450	815.85	450	306	153	539	257	15800	1
490103500	1,543.50	500	340	170	603	283	20200	1
490103560	2,199.49	560	376	188	674	317	28000	1
490103630	3,450.83	630	418	209	759	356	39200	1
490103710	4,696.65	710	472	236	853	400	55700	1
490103800	6,284.25	800	500	250	955	450	87000	1

460104 EF LightFit Coupler PN10



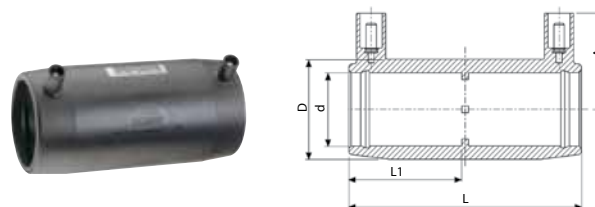
Code	£ ea	Size d	L	L1	D	A	W	Box Qty
460104040	11.18	40	90	43	56	47	96	200
460104050	11.51	50	100	49	68	52	98	132
460104063	12.87	63	118	57	77	57	157	112
460104075	19.52	75	126	61	90	63	215	60
460104090	21.07	90	148	72	108	69	360	44
460104110	27.00	110	163	80	131	79	540	25
460104125	33.72	125	173	85	149	87	740	20
460104140	36.30	140	182	89	167	94	970	12
460104160	39.64	160	198	97	193	104	1320	6
460104180	55.57	180	212	104	215	114	1650	5
460104200	71.80	200	232	114	235	127	2100	4
460104225	92.09	225	240	118	264	141	2825	4
460104250	127.97	250	256	126	293	155	3728	2
460104280	186.05	280	275	135	332	166	4850	1
460104315	211.64	315	284	140	374	184	6950	1
460104355	299.65	355	280	138	421	204	7980	1
460104400	413.21	400	296	146	474	227	11893	1

460103 EF LightFit Coupler PN10 Large Diameter



Code	£ ea	Size d	L	L1	D	A	W	Box Qty
460103450	683.55	450	310	155	518	255	11700	1
460103500	1,278.90	500	340	170	576	283	16000	1
460103560	1,830.15	560	376	188	645	317	21500	1
460103630	2,646.00	630	448	209	726	356	30820	1
460103710	3,610.69	710	472	236	817	400	43100	1
460103800	4,520.25	800	500	250	913	450	57300	1
460103900	4,998.00	900	500	250	1031	500	70000	1

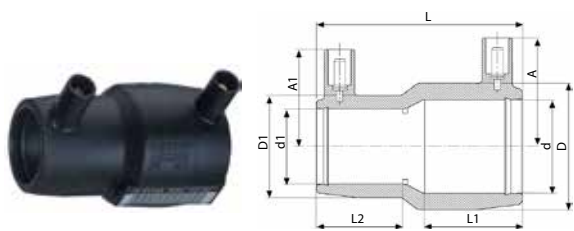
4901L4 EF Long Coupler PN16



Code	£ ea	Size d	L	L1	D	A	W	Box Qty
4901L4032	10.94	32	104	50	44	43	84	272
4901L4040	13.20	40	121	59	56	46	135	128
4901L4050	16.60	50	139	68	68	51	215	96
4901L4063	19.61	63	166	81	82	57	317	48

PN25 EF Couplers, 50mm to 315mm available on request.

491104 EF Reducing Coupler



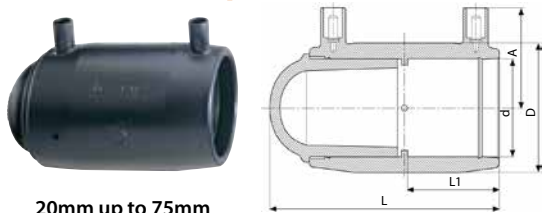
25 x 20mm up to 110 x 90mm



125 x 90mm up to 180 x 125mm

Code	£ ea	Size dxd1	L	A	A1	L1	L2	D	D1	W	Box Qty
491104025020	7.50	25 x 20	71	39	39	35	35	36	36	46	480
491104032020	7.50	32 x 20	81	43	37	40	35	45	32	59	360
491104032025	8.77	32 x 25	81	43	39	40	35	45	36	56	360
491104040025	15.38	40 x 25	90	47	38	44	40	56	37	85	200
491104040032	15.38	40 x 32	90	47	43	44	40	56	44	92	160
491104050025	22.18	50 x 25	100	52	41	49	41	68	37	118	160
491104050032	22.18	50 x 32	100	52	45	49	40	68	45	123	128
491104050040	22.18	50 x 40	100	52	48	49	44	68	56	135	128
491104063032	22.12	63 x 32	119	59	45	57	40	82	45	179	96
491104063040	22.12	63 x 40	119	59	49	57	44	82	56	192	96
491104063050	22.12	63 x 50	119	59	54	57	49	82	68	223	80
491104075063	25.19	75 x 63	126	66	59	66	57	98	82	214	65
491104090050	28.46	90 x 50	143	78	53	71	49	116	69	430	54
491104090063	28.46	90 x 63	143	78	61	71	57	116	82	460	44
491104090075	28.46	90 x 75	143	78	67	71	61	116	98	480	41
491104110063	40.03	110 x 63	161	84	61	78	57	139	82	639	32
491104110090	40.03	110 x 90	161	84	74	78	72	139	116	740	23
491104125090	57.14	125 x 90	171	88	70	85	82	158	116	1019	18
491104125110	62.43	125 x 110	71	88	80	85	78	158	141	1025	18
491104160090	96.25	160 x 90	193	105	69	94	72	199	116	1440	12
491104160110	96.25	160 x 110	193	105	80	94	81	199	141	1520	12
491104160125	96.25	160 x 125	195	105	89	94	85	199	158	1570	6
491104180125	105.41	180 x 125	212	116	87	103	85	222	158	2060	6

491204 EF End Cap



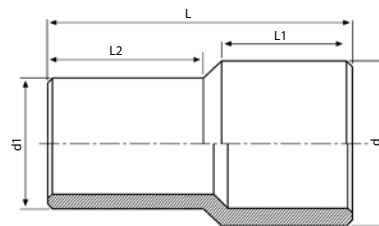
20mm up to 75mm



90mm up to 315mm

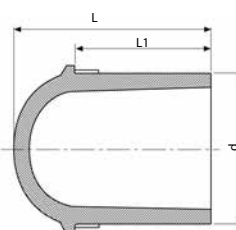
Code	£ ea	Size d	L	L1	D	A	W	Box Qty
491204020	13.26	20	84	37	31	34	55	400
491204025	14.21	25	92	40	36	37	50	400
491204032	15.55	32	103	42	44	42	76	300
491204040	18.08	40	114	47	56	46	130	160
491204050	26.44	50	121	49	67	51	204	120
491204063	29.91	63	142	57	82	57	327	72
491204075	54.63	75	156	61	98	64	499	48
491204090	61.58	90	183	73	117	70	820	30
491204110	88.47	110	206	78	140	81	1259	20
491204125	99.32	125	222	85	157	87	1702	15
491204140	113.55	140	237	90	174	97	2346	10
491204160	149.67	160	261	93	194	105	2990	6
491204180	195.48	180	283	105	218	116	4159	5
491204200	237.69	200	289	109	242	126	5260	4
491204225	250.34	225	318	119	272	138	7260	2
491204250	300.76	250	344	123	311	156	8381	1
491204315	677.87	315	405	139	387	184	16045	1

491107 EF Spigot Reducer SDR11



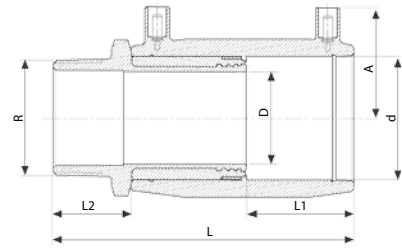
Code	£ ea	Size dxd1	L	L1	L2	W	Box Qty
491107050032	12.17	50 x 32	131	59	60	100	160
491107063032	16.63	63 x 32	131	59	58	110	144
491107063040	16.62	63 x 40	132	59	58	120	144
491107063050	16.63	63 x 50	132	60	60	125	128
491107075063	25.64	75 x 63	151	71	65	210	72
491107090050	35.02	90 x 50	156	81	59	280	56
491107090063	35.02	90 x 63	160	80	65	300	48
491107090075	35.02	90 x 75	166	80	71	320	40
491107110063	46.73	110 x 63	167	83	66	450	36
491107110075	46.73	110 x 75	169	83	72	460	36
491107110090	46.73	110 x 90	178	83	80	510	28
491107125063	56.46	125 x 63	202	90	66	650	24
491107125090	56.46	125 x 90	186	90	81	655	24
491107125110	56.46	125 x 110	188	90	84	730	18
491107140090	81.29	140 x 90	208	95	80	850	16
491107140110	81.29	140 x 110	195	95	83	850	16
491107140125	81.29	140 x 125	199	95	89	950	12
491107160090	108.51	160 x 90	258	110	89	1280	10
491107160110	108.76	160 x 110	255	115	89	1360	10
491107160125	108.76	160 x 125	255	110	97	1470	10
491107160140	108.51	160 x 140	255	107	104	1530	10
491107180090	133.54	180 x 90	245	107	85	1500	10
491107180125	133.54	180 x 125	221	107	89	1500	10
491107180160	133.54	180 x 160	225	107	100	1750	8
491107200160	153.72	200 x 160	233	115	100	2180	6
491107200180	153.72	200 x 180	241	116	106	2350	5
491107225200	236.82	225 x 200	272	126	120	3255	1
491107250180	300.10	250 x 180	316	151	105	4050	1
491107250200	300.10	250 x 200	324	151	116	4380	1

491207 EF Spigot End Plug SDR11



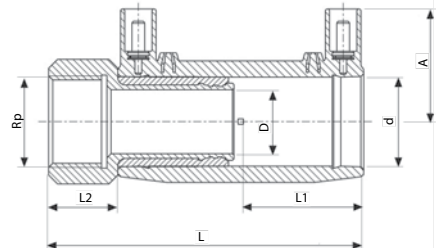
Code	£ ea	Size d	L	L1	W	Box Qty
491207032	4.17	32	52	39	17	960
491207050	5.89	50	68	48	52	352
491207063	11.06	63	81	57	94	192
491207075	12.40	75	90	60	149	132
491207090	20.69	90	105	70	250	72
491207110	28.30	110	121	78	430	57
491207125	34.49	125	131	82	596	36
491207140	40.43	140	142	87	797	25
491207160	55.18	160	157	94	1149	18
491207180	65.54	180	172	101	1600	14
491207200	170.38	200	178	112	2089	10
491207225	187.36	225	196	120	2800	6
491207250	240.35	250	216	130	3920	4
491207280	304.48	280	257	162	5300	3
491207315	417.35	315	262	167	7200	2

492104 EF Male Transition Coupler
(BSPT thread)



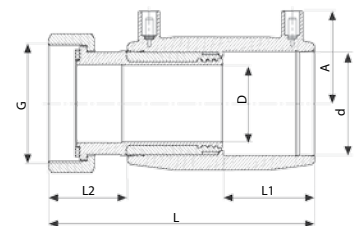
Code	£ ea	Size d x R	L	L1	L2	D	A	W	Box Qty
492104020005	33.94	20 x 1/2"	105	37	29	14	34	129	200
492104025007	35.00	25 x 3/4"	111	40	29	19	37	150	150
492104032005	35.00	32 x 1/2"	117	42	29	23	42	142	100
492104032007	35.00	32 x 3/4"	117	42	29	23	42	263	100
492104032010	35.00	32 x 1"	122	42	34	23	42	285	100
492104032013	44.19	32 x 1 1/4"	124	42	36	23	42	393	60
492104032015	47.42	32 x 1 1/2"	124	42	36	23	42	404	60
492104040010	42.19	40 x 1"	131	47	34	29	46	409	72
492104040013	42.19	40 x 1 1/4"	133	47	36	29	46	470	54
492104040015	44.70	40 x 1 1/2"	133	47	36	29	46	483	54
492104040020	60.65	40 x 2"	138	47	41	29	46	500	36
492104050010	47.88	50 x 1"	135	49	34	38	51	513	48
492104050013	49.11	50 x 1 1/4"	137	49	36	38	51	569	48
492104050015	50.54	50 x 1 1/2"	137	49	36	38	51	547	48
492104050020	63.12	50 x 2"	142	49	41	38	51	748	30
492104063013	73.37	63 x 1 1/4"	153	57	36	48	57	884	30
492104063015	67.70	63 x 1 1/2"	153	57	36	48	57	845	30
492104063020	69.69	63 x 2"	158	57	41	48	57	921	30
492104075020	100.58	75 x 2"	167	61	41	59	64	1305	16
492104075025	100.58	75 x 2 1/2"	172	61	46	59	64	1500	16

493104 EF Female Transition Coupler
(BSPT thread)



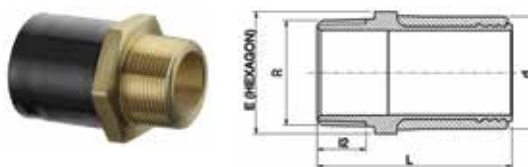
Code	£ ea	Size d x Rp	L	L1	L2	D	A	W	Box Qty
493104020005	31.25	20 x 1/2"	96	37	20	14	35	130	200
493104025007	36.33	25 x 3/4"	105	40	23	19	38	145	150
493104032007	40.81	32 x 3/4"	113	42	25	23	42	147	100
493104032010	41.40	32 x 1"	113	42	25	23	42	265	100
493104040010	50.42	40 x 1"	122	47	25	29	46	507	54
493104040013	50.42	40 x 1 1/4"	122	47	25	29	46	407	54
493104040015	53.38	40 x 1 1/2"	122	47	25	29	46	419	48
493104050015	61.35	50 x 1 1/2"	126	49	25	38	51	491	48
493104050020	70.91	50 x 2"	131	49	30	38	51	685	40
493104063015	70.60	63 x 1 1/2"	147	57	30	48	57	975	24
493104063020	77.23	63 x 2"	147	57	30	48	57	879	30

494104 EF Female Free Nut Coupler
(BSPP thread)



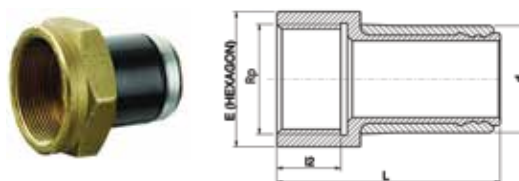
Code	£ ea	Size d x G	L	L1	L2	D	A	W	Box Qty
494104025007	44.51	25 x 3/4"	112	40	30	14	37	150	140
494104032010	52.35	32 x 1"	124	42	36	19	42	260	100
494104050010	72.52	50 x 1"	136	49	36	19	52	700	32
494104063020	92.24	63 x 2"	161	57	44	38	57	770	28

492107 EF Weldable Transition Male Adaptor (BSPT thread)



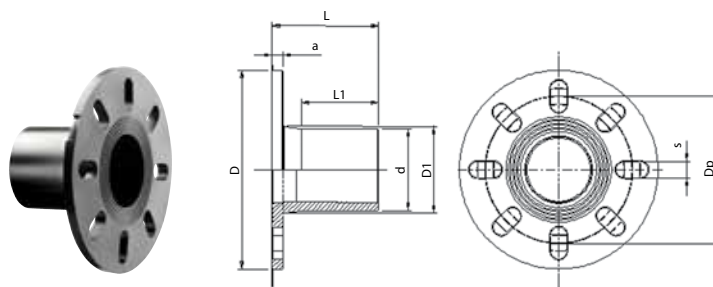
Code	£ ea	Size d x R	L	I2	E	W	Box Qty
492107020005	23.67	20 x 1/2"	64	17	27	0.087	250
492107025007	27.94	25 x 3/4"	67	17	32	0.112	250
492107032007	34.34	32 x 3/4"	72	17	40	0.209	100
492107032010	34.34	32 x 1"	76	20	40	0.209	100
492107040010	44.12	40 x 1"	81	20	50	0.310	90
492107040013	43.06	40 x 1 1/4"	83	22	50	0.352	60
492107040015	46.50	40 x 1 1/2"	83	22	55	0.379	60
492107050010	49.35	50 x 1"	86	20	55	0.365	60
492107050015	47.23	50 x 1 1/2"	88	22	55	0.404	60
492107050020	55.15	50 x 2"	93	26	70	0.600	40
492107063015	62.59	63 x 1 1/2"	97	22	70	0.624	32
492107063020	61.32	63 x 2"	102	26	70	0.687	32
492107075025	88.17	75 x 2 1/2"	111	29	85	0.694	16

493107 EF Weldable Transition Female Adaptor (BSPT thread)



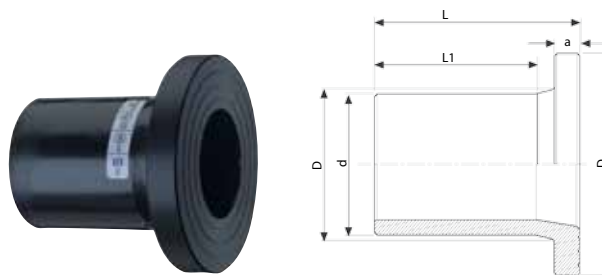
Code	£ ea	Size d x Rp	L	I2	E	W	Box Qty
493107020005	40.97	20 x 1/2"	55	17	27	0.075	250
493107025007	46.47	25 x 3/4"	61	21	32	0.075	250
493107032007	54.12	32 x 3/4"	68	21	41	0.196	100
493107032010	60.54	32 x 1"	68	21	41	0.196	100
493107040013	53.83	40 x 1 1/4"	72	21	50	0.220	90
493107050015	85.80	50 x 1 1/2"	77	21	55	0.344	80
493107050020	85.80	50 x 2"	82	26	70	0.533	40
493107063015	86.21	63 x 1 1/2"	91	26	70	0.742	32
493107063020	90.52	63 x 2"	91	26	70	0.634	32

490209 Full Face Flange 90 SDR11



Code	£ ea	Size d	L	L1	D	D1	a	Dp	s	W	Box Qty
490209090	51.71	90	118	86	220	98	12	163	20	995	18

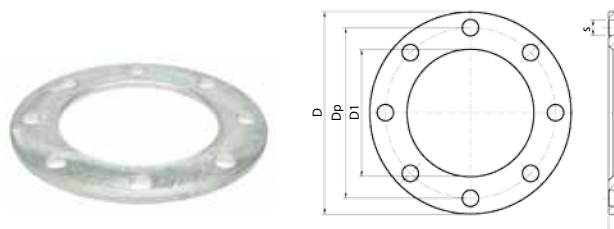
490207 EF Spigot Flange Adaptor SDR11



Code	£ ea	Size d	L	L1	a	D	D1	W	Box Qty
490207032	9.30	32	85	60	10	68	40	57	160
490207050	14.33	50	104	75	12	88	61	132	144
490207063	16.63	63	120	87	14	102	75	220	60
490207075	21.12	75	130	92	16	122	89	322	48
490207090	27.69	90	140	96	17	138	105	475	32
490207110	34.57	110	160	110	18	158	125	747	20
490207125	42.67	125	182	132	25	158	132	945	16
490207140	54.71	140	180	130	25	188	155	1290	12
490207160	61.16	160	180	130	25	212	175	1600	8
490207180	96.29	180	198	140	30	212	187	1990	8
490207200	109.97	200	200	135	32	268	232	3100	4
490207225	118.27	225	200	135	32	268	235	3360	4
490207250	181.73	250	215	145	35	320	285	5080	3
490207251	240.66	280	228	160	35	320	291	5625	2
490207315	304.85	315	238	160	35	370	335	7470	1

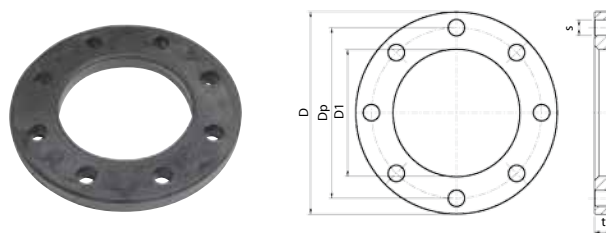
EPDM gaskets to suit full face flange & spigot flange adaptors (7228) are available on pg9.

49029 EF Flange Backing Ring Plated



Code	£ ea	Size d	D	Dp	D1	s	t	No. of Holes
49029006	18.82	32 x 1"	115	85	42	14	9	4
49029007	21.04	50 x 1½"	150	110	62	18	9	4
49029008	21.62	63 x 2"	165	125	78	18	9	4
49029009	28.49	75 x 2½"	185	145	92	18	9	4
49029010	32.13	90 x 3"	200	160	108	18	9	8
49029020	33.85	110/125 x 4"	220	180	135	18	9	8
49029021	55.80	140 x 5"	250	210	158	18	10	8
49029040	57.74	160 x 6"	285	240	178	22	10	8
49029045	57.74	180 x 6"	285	240	188	22	10	8
49029050	93.77	200/225 x 8"	340	295	238	22	10	12
49029250	163.08	250 x 10"	405	335	288	26	16	12
49029280	163.08	280 x 10"	405	335	294	26	16	12
49029315	265.26	315 x 12"	460	410	338	26	16	12

09903 EF PP Coated Flange Backing Ring Plastic Coated



Code	£ ea	Size d	D	Dp	D1	s	t	No. of Holes
09903032	14.56	32 x 1"	115	85	42	14	16	4
09903050	21.13	50 x 1 1/2"	150	110	62	18	18	4
09903063	26.37	63 x 2"	165	125	78	18	18	4
09903075	29.86	75 x 2 1/2"	185	145	92	18	20	4
09903090	35.74	90 x 3"	200	160	108	18	20	8
09903110	48.69	110 x 4"	200	180	128	18	22	8
09903125	48.69	125 x 4"	220	180	135	18	22	8
09903140	61.24	140 x 5"	250	210	158	18	22	8
09903160	75.39	160 x 6"	285	240	178	22	24	8
09903180	75.39	180 x 6"	285	240	188	22	24	8
09903200	109.00	200 x 8"	340	295	235	22	24	8
09903225	109.00	225 x 8"	340	295	238	22	24	8
09903250	132.31	250 x 10"	395	350	288	22	26	12
09903280	132.31	280 x 10"	395	350	294	22	26	12
09903315	202.51	315 x 12"	445	400	338	22	26	12

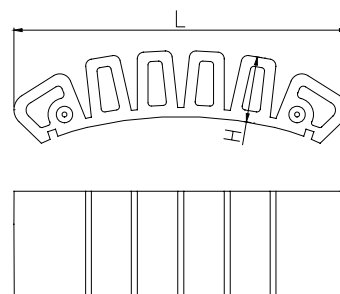
49009 EF Flex Restraint 160 - 1600mm

Terminals are side mounted enabling use of a wide 50mm/2" strap, for better clamping.

Concealed wire - eliminates risk of smoke or unintentional contact with hot wire.



Clips for attaching the restraint to the clamping strap - facilitates installation.



Code	£ ea	Size	L	H	B	W	Box Qty
49009999	177.01	160-1600	202	40	65	251	60

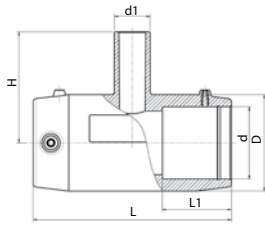
The Flex Restraint is used where axial restraint of PE pipe is required. The restraint is a flexible bar, which is fused to the pipe by electrofusion to create a welded shoulder that can restrain the axial movement of pipes in various applications:

- Anchoring the pipe to a concrete wall such as a manhole or tank.
- Restraining the pipe to a gasket bell fitting to facilitate cross connection with other piping systems.
- Blocking pipe movement after slip-lining.

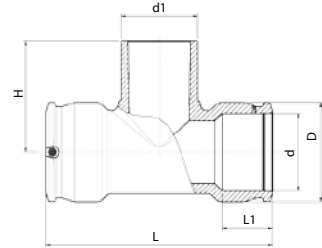
EF Flex Restraint technical specifications

- Fits any PE pipe in the size range of 160-1600mm.
- Made of PE 100 / PE4710 resin.
- Can be welded by any standard EF control box with barcode reading or manual input.
- Designed and tested to support 31,000N (3,100kg) of axial force.
- Use multiple units to achieve required force.

490404 EF 90° Tee



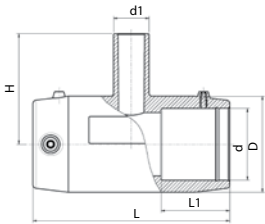
20mm up to 75mm



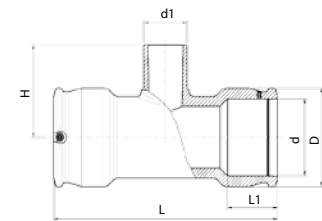
90mm up to 250mm

Code	£ ea	Size d	L	L1	D	H	A	W	Box Qty
490404020	16.39	20 x 20 x 20	96	37	33	60	39	60	260
490404025	16.22	25 x 25 x 25	103	39	44	66	43	109	168
490404032	17.44	32 x 32 x 32	104	39	44	74	43	96	144
490404040	27.04	40 x 40 x 40	120	43	56	90	47	165	96
490404050	32.97	50 x 50 x 50	139	48	68	102	52	257	56
490404063	37.05	63 x 63 x 63	167	58	82	119	58	417	32
490404075	55.76	75 x 75 x 75	196	63	96	129	62	638	26
490404090	63.92	90 x 90 x 90	294	71	113	137	71	1090	15
490404110	95.60	110 x 110 x 110	326	71	143	160	81	1955	8
490404125	122.94	125 x 125 x 125	382	86	165	177	88	2950	4
490404160	202.95	160 x 160 x 160	440	86	208	206	106	4700	3
490404180	227.30	180 x 180 x 180	422	106	245	250	116	7200	1
490404200	422.22	200 x 200 x 200	451	114	261	265	125	8650	1
490404225	479.78	225 x 225 x 225	494	122	293	290	140	11860	1
490404250	635.16	250 x 250 x 250	538	129	326	315	152	16250	1

491404 EF Reducing Tee



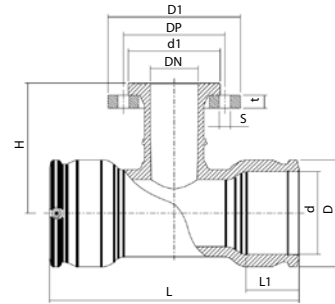
20mm up to 75mm



90mm up to 250mm

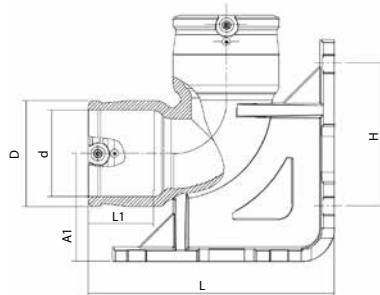
Code	£ ea	Size d	L	L1	D	H	A	W	Box Qty
491404025020	20.99	25 x 20 x 25	104	39	44	25	43	108	168
491404032020	20.99	32 x 20 x 32	104	39	44	32	43	89	144
491404032025	21.00	32 x 25 x 32	104	39	44	32	43	91	144
491404040025	25.37	40 x 25 x 40	120	43	56	40	47	150	96
491404040032	25.37	40 x 32 x 40	120	43	56	40	47	152	96
491404050020	33.53	50 x 20 x 50	139	48	68	50	52	224	64
491404050025	33.53	50 x 25 x 50	139	48	68	50	52	225	64
491404050032	33.53	50 x 32 x 50	139	48	68	50	52	228	64
491404063020	47.83	63 x 20 x 63	167	49	82	63	58	348	40
491404063032	47.83	63 x 32 x 63	167	58	82	63	58	353	32
491404063040	47.83	63 x 40 x 63	167	58	82	63	58	365	32
491404063050	47.83	63 x 50 x 63	167	58	82	63	58	381	32
491404075063	70.23	75 x 63 x 75	196	63	96	75	62	607	26
491404090063	89.69	90 x 63 x 90	294	68	113	90	71	1050	15
491404110063	196.44	110 x 63 x 110	326	71	143	110	81	1715	9
491404110090	151.55	110 x 90 x 110	326	71	143	110	81	1815	8
491404125090	172.40	125 x 90 x 125	382	86	165	125	88	2805	5
491404125110	185.35	125 x 110 x 125	382	86	165	125	88	2859	5
491404160090	271.82	160 x 90 x 160	440	86	208	160	106	4450	3
491404160110	271.82	160 x 110 x 160	440	86	208	160	106	4450	3
491404180090	373.26	180 x 90 x 180	422	106	245	180	116	6090	2
491404180125	373.26	180 x 125 x 180	422	106	245	180	116	6410	2
491404180160	373.26	180 x 160 x 180	422	106	245	180	116	6950	1
491404200110	474.72	200 x 110 x 200	451	114	261	200	125	7235	2
491404225110	535.84	225 x 110 x 225	494	122	293	225	140	10000	1
491404250110	708.83	250 x 110 x 250	538	129	326	250	152	13400	1

499404 EF Flanged Tee



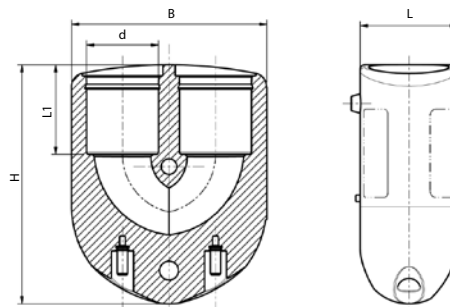
Code	£ ea	Size dxd1	L	L1	D	H	A	D1	t	s	d1	DP	W	Box Qty
499404090080	166.74	90 x 80 x 90	294	71	113	165	71	200	20	8 x 18	138	160	2835	8
499404110080	198.38	110 x 80 x 110	326	71	143	181	81	200	20	8 x 18	138	160	3560	6
499404110100	226.15	110 x 100 x 110	326	71	143	181	81	220	22	8 x 18	158	180	4240	6
499404125080	207.54	125 x 80 x 125	382	86	165	190	88	200	20	8 x 18	138	160	4550	4
499404125100	216.31	125 x 100 x 125	382	82	165	190	88	220	22	8 x 18	158	180	5180	3
499404160080	330.37	160 x 80 x 160	440	86	208	210	106	200	20	8 x 18	138	160	5345	3
499404160100	349.05	160 x 100 x 160	440	86	208	210	106	220	22	8 x 18	158	180	6785	3
499404180080	423.05	180 x 80 x 180	422	106	245	225	116	200	20	8 x 18	138	160	7745	2
499404180100	433.45	180 x 100 x 180	422	106	245	225	116	220	22	8 x 18	158	180	8550	1
499404200080	979.82	200 x 80 x 200	451	114	261	240	125	200	20	8 x 18	138	160	8510	1
499404200100	983.65	200 x 100 x 200	451	114	261	245	125	220	22	8 x 18	158	180	9230	1
499404225080	1,067.17	225 x 80 x 225	494	122	293	255	140	200	20	8 x 18	138	160	11240	1
499404225100	1,099.43	225 x 100 x 225	494	122	293	260	140	220	22	8 x 18	158	180	11900	1
499404250080	1,379.72	250 x 80 x 250	538	129	326	270	152	200	20	8 x 18	138	160	14750	1
499404250100	1,411.99	250 x 100 x 250	538	129	326	275	152	220	22	8 x 18	158	180	15400	1

491504 EF 90° Duck Foot Elbow



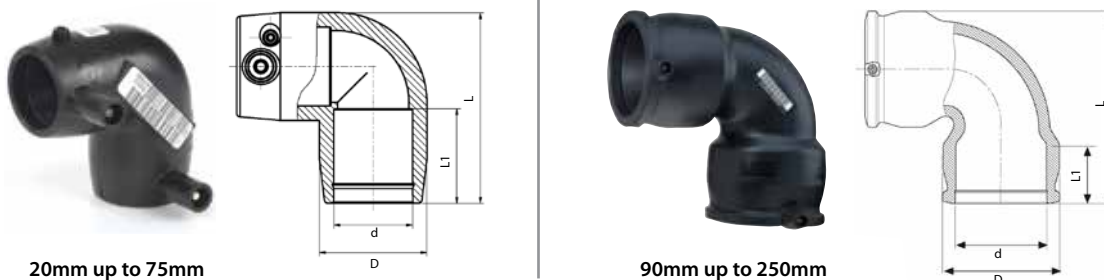
Code	£ ea	Size d	L	L1	D	A	A1	H	W	Box Qty
491504090	130.08	90	261	69	112	71	115	146	2260	5

490904 EF 180° Elbow



Code	£ ea	Size d	L	L1	D	A	W	Box Qty
490904025	42.12	25	38	38	38	32	163	216
490904032	50.78	32	44	41	44	41	216	144
490904040	63.18	40	53	48	53	48	323	80

490504 EF 90° Elbow



20mm up to 75mm

90mm up to 250mm

Code	£ ea	Size d	L	L1	D	A	W	Box Qty
490504020	17.44	20	66	35	36	38	65	320
490504025	17.44	25	66	37	36	38	53	320
490504032	17.44	32	83	40	44	43	85	192
490504040	24.92	40	92	44	55	47	138	120
490504050	34.21	50	108	48	68	52	211	72
490504063	36.45	63	131	57	81	59	320	40
490504075	49.41	75	158	69	97	62	527	33
490504090	52.03	90	213	78	113	69	875	19
490504110	79.34	110	243	79	143	79	1519	9
490504125	89.74	125	271	100	165	89	2424	7
490504140	115.88	140	309	93	183	94	3024	4
490504160	166.48	160	232	87	209	106	3990	3
490504180	204.19	180	412	105	244	115	7590	2
490504200	350.77	200	449	112	262	124	8670	1
490504225	418.97	225	498	121	295	140	12200	1
490504250	520.80	250	550	130	327	152	13500	1

490604 EF 45° Elbow



32mm up to 75mm 90mm up to 250mm

Code	£ ea	Size d	L	L1	D	A	W	Box Qty
490604032	16.62	32	95	39	45	43	85	240
490604040	23.60	40	108	42	55	46	117	160
490604050	27.28	50	125	49	68	51	181	96
490604063	36.39	63	148	57	81	59	264	60
490604075	49.32	75	180	71	96	62	426	40
490604090	54.43	90	243	75	112	69	759	22
490604110	80.47	110	271	81	143	78	1269	12
490604125	90.28	125	304	86	165	88	2030	8
490604140	115.88	140	342	92	182	95	2471	5
490604160	166.34	160	350	95	209	105	3990	4
490604180	205.07	180	434	105	244	114	6150	2
490604200	350.77	200	472	112	261	125	7050	1
490604225	418.97	225	520	120	294	140	9800	1
490604250	520.80	250	571	129	326	151	13400	1

490804 EF 22.5° Elbow

Code	£ ea	Size d	L	L1	D	A	W	Box Qty
490804090	46.82	90	214	72	113	71	665	26
490804110	59.47	110	232	71	143	81	1087	14
490804125	87.01	125	274	86	165	88	1850	8
490804160	153.73	160	302	86	209	106	2930	5
490804180	204.19	180	391	105	244	115	5360	2

Adjustable Elbow

PLASSON's Adjustable Elbow and One Sided Adjustable Elbow allows welding to pipes at any angle up to 12° per side. The PLASSON adjustable elbow simply and easily solves situations such as:

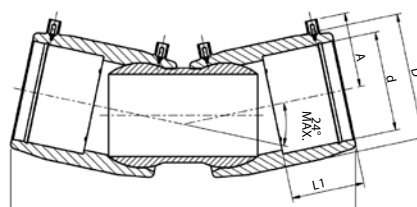
- Misaligned pipes.
- Connections at an undefined angle.
- Connection of misaligned pipes to valves, pumps and other stationery devices.
- Connection of buried pipes where only a short section is exposed
- Water PN16.
- Gas PE 100 SDR 11 (MOP 10 bar).

Prior to welding, the ball joints are fully adjustable within the +12° range. After welding, the joint is a fixed electrofusion welded connection.



4947C4 EF Adjustable Elbow

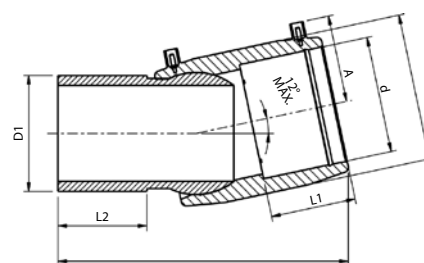
Adjustment angle
0° to 24°



Code	£ ea	Size d	L	L1	D	A	W	Box Qty
4947C4090	152.81	90	341	72	116	77	1450	12
4947C4110	180.88	110	362	80	140	83	2030	8
4947C4125	223.97	125	382	85	157	95	2630	8
4947C4160	321.83	160	456	92	200	114	4510	3
4947C4180	411.10	180	511	104	224	128	7490	2
4947C4200	560.50	200	512	104	250	125	9733	2
4947C4225	710.37	225	600	105	282	141	13230	2
4947C4250	986.74	250	644	123	312	156	16775	1

4947D4 EF Adjustable Elbow One Sided

Adjustment angle
0° to 12°



Code	£ ea	Size d x D1	L	L1	L2	D	A	W	Box Qty
4947D4090	135.06	90 x 90	258	72	82	116	77	940	20
4947D4110	149.05	110 x 110	276	85	85	140	83	1290	12
4947D4125	181.51	125 x 125	292	90	90	157	95	1740	12
4947D4160	268.76	160 x 160	335	100	100	200	114	3150	4
4947D4180	331.50	180 x 180	365	138	138	223	128	4210	3
4947D4200	445.10	200 x 200	370	104	116	250	125	6172	2
4947D4225	564.12	225 x 225	426	105	124	282	141	8340	2
4947D4250	783.58	250 x 250	455	123	134	312	156	10800	1

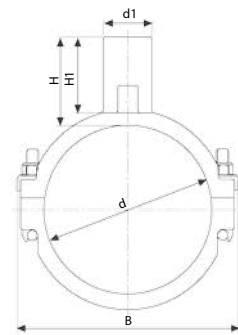
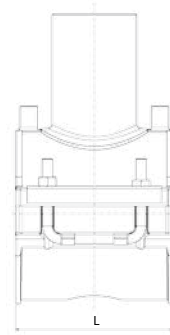
495804 EF Branch Saddle



63mm up to 180mm
Outlets 32mm to 63mm

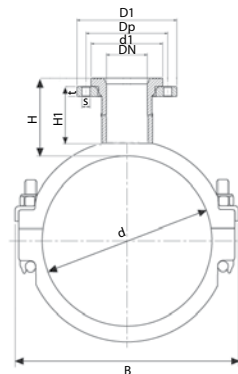
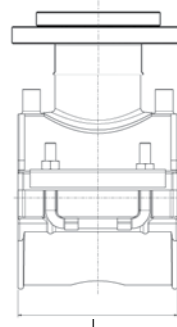


200mm up to 315mm and
all sizes with Outlet 90mm



Code	£ ea	Size d x d1	B	H	H1	L	Max Cutting Dia	W	Box Qty
495804063032	64.62	63 x 32	100	59	49	118	23	394	56
495804063063	64.62	63 x 63	100	94	85	118	45	462	40
495804090032	64.62	90 x 32	126	59	49	118	23	519	32
495804090063	64.62	90 x 63	126	94	85	118	45	608	24
495804090090	94.07	90 x 90	139	105	90	176	66	934	15
495804110032	64.62	110 x 32	148	59	49	118	23	585	24
495804110050	64.62	110 x 50	148	93	82	118	37.5	629	20
495804110063	65.69	110 x 63	148	94	85	118	45	658	20
495804110090	94.07	110 x 90	162	105	90	176	68	948	18
495804125032	64.62	125 x 32	162	59	49	118	23	620	24
495804125050	64.62	125 x 50	162	93	82	118	37.5	690	20
495804125063	64.62	125 x 63	162	94	85	118	45	721	16
495804125090	94.07	125 x 90	169	105	90	176	68	953	18
495804140032	89.97	140 x 32	180	59	49	118	23	689	24
495804140050	89.97	140 x 50	180	93	82	118	37.5	721	16
495804140063	89.97	140 x 63	180	94	85	118	45	736	16
495804140090	116.98	140 x 90	174	105	90	176	68	965	16
495804160032	100.28	160 x 32	200	59	49	118	23	708	16
495804160050	100.28	160 x 50	200	93	82	118	37.5	787	16
495804160063	79.40	160 x 63	200	94	85	118	45	825	16
495804160090	198.18	160 x 90	176	105	90	176	68	956	16
495804180032	88.68	180 x 32	219	59	49	118	23	800	16
495804180050	89.62	180 x 50	219	93	82	118	37.5	828	12
495804180063	88.68	180 x 63	219	94	85	118	45	886	12
495804180090	198.18	180 x 90	182	105	90	176	68	976	15
495804200063	96.50	200 x 63	202	103	91	176	47	862	15
495804200090	220.92	200 x 90	202	105	90	176	68	900	15
495804225063	96.50	225 x 63	227	103	91	176	47	930	15
495804225090	220.92	225 x 90	227	105	90	176	68	983	15
495804250063	98.85	250 x 63	252	103	91	176	47	970	15
495804250090	220.92	250 x 90	252	105	90	176	68	990	15
495804280090	227.39	280 x 90	282	105	90	176	-	990	-
495804315090	294.98	315 x 90	317	105	90	176	-	990	-

4959 EF Flanged Branch Saddle



Code	£ ea	d x DN	L	B	H	H1	D1	Dp	d1	t	s	No.Holes	W	Box Qty
495904125080	315.25	125 x 80/3"	176	169	114	98	71	160	66.4	21	11.3	8	2340	8
495904180080	341.61	180 x 80/3"	176	178	114	103	71	160	71.5	21	11.3	8	1890	6

496304 EF Tapping Saddle



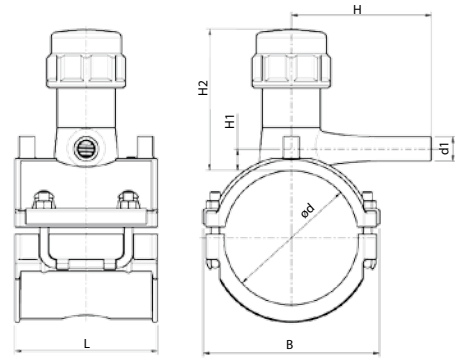
40mm up to 63mm



75mm up to 180mm



200mm up to 250mm



Code	£ ea	Size d x d1	H	B	H1	H2	L	Welding Cup	W	Box Qty
496304040032	58.53	40 x 32	121	66	11	94	100	Type C	370	52
496304050032	58.53	50 x 32	122	76	12	98	100	Type C	380	52
496304063032N	58.53	63 x 32	99	100	12	90	118	Type C	380	40
496304063063	93.05	63 x 63	175	100	64	177	118	Type A	1,183	16
496304090025	58.53	90 x 25	108	126	16	114	118	Type B	1,120	20
496304090032	58.53	90 x 32	126	126	16	114	118	Type B	1,120	20
496304090063	93.05	90 x 63	175	126	64	177	118	Type A	1,300	14
496304110032	58.53	110 x 32	127	148	16	114	118	Type B	970	20
496304110063	93.05	110 x 63	175	148	64	177	118	Type A	1,383	12
496304125032	58.53	125 x 32	131	162	16	114	118	Type B	1,230	15
496304125063	93.05	125 x 63	175	162	64	177	118	Type A	1,420	12
496304160032	58.53	160 x 32	144	199	16	138	118	Type A	1,320	10
496304160063	93.05	160 x 63	197	199	20	138	118	Type A	1,390	10
496304180032	80.61	180 x 32	144	219	18	138	118	Type A	1,565	10
496304180063	93.05	180 x 63	197	219	20	138	118	Type A	1,605	10
496304200032	146.78	200 x 32	132	202	56	177	176	Type A	1,445	8
496304200063	146.78	200 x 63	175	202	64	177	176	Type A	1,579	8
496304225032	146.78	225 x 32	132	227	56	177	176	Type A	1,450	8
496304225063	146.78	225 x 63	175	227	64	177	176	Type A	1,589	8
496304250032	146.78	250 x 32	132	252	56	177	176	Type A	1,464	8
496304250063	184.95	250 x 63	175	252	64	177	176	Type A	1,595	8

7991 Tapper Assembly Tool for use with 496304 see pg32.



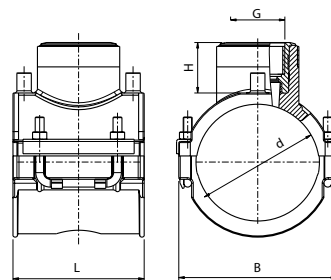
493804 EF Transition Saddle



63mm up to 180mm
Outlets 1¼" and 1½"



90mm up to 250mm
Outlet 2"



Code	£ ea	Size d x G	B	H	L	W	Box Qty
493804063013	71.37	63 x 1 ¼"	100	53	118	612	48
493804090015	94.47	90 x 1 ½"	121	53	118	930	16
493804090020	113.63	90 x 2"	142	76	176	1436	14
493804110015	100.01	110 x 1 ½"	142	53	118	1000	12
493804110020	125.54	110 x 2"	158	76	176	1500	12
493804125015	131.19	125 x 1 ½"	158	53	118	1049	12
493804125020	134.09	125 x 2"	166	76	176	1510	12
493804160020	149.58	160 x 2"	176	76	176	1540	10
493804180020	129.96	180 x 2"	182	76	176	1500	10
493804200020	164.68	200 x 2"	202	76	176	1575	10
493804225020	183.65	225 x 2"	227	76	176	1570	10
493804250020	169.75	250 x 2"	252	76	176	1546	10

Large Diameter Multi-size Saddles

PLASSON multi-size saddles have a large fusion zone which exceeds the requirements of the various international standards resulting in considerably greater robustness and reliability of the fusion joint. Tooling required to fit these saddles is available to purchase or to hire from our hire partners.

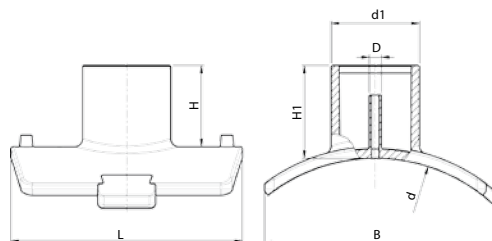
PLASSON saddles have:

- PN16 rating.
- Full bore outlet to SDR11 pipe.
- Flanged or spigot branches.
- Suitable for SDR11 to SDR26 pipes.
- Pressure test facilities built-in.
- Dedicated tooling to ensure success.



495804 EF Branch Saddle

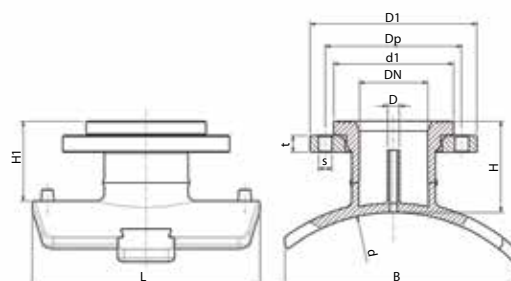
multi-size
250/280 - 400mm
450 - 800mm



Code	£ ea	Size d x d1	SDR up to	B	H	H1	L	W	Box Qty
495804400090T	395.91	250-400 x 90	17	305	102	115	300	1510	7
495804400110T	491.99	250-400 x 110	17	305	104	117	300	1650	7
495804400125T	596.18	250-400 x 125	17	305	125	110	300	1680	6
495804400160T	1,146.05	280-400 x 160	17	305	119	132	300	2167	6
495804710090T	430.64	450-800 x 90	26	315	105	117	300	1598	7
495804710110T	541.77	450-800 x 110	26	315	105	117	300	1601	7
495804710125T	659.85	450-800 x 125	26	315	109	117	300	1739	7
495804710160T	1,331.27	450-800 x 160	26	315	115	130	300	2017	6
495803630250T	2,920.98	500-630 x 250	26	400	203	225	420	6,670	1

495904 EF Flanged Branch Saddle

multi-size
250/280 - 400mm
450 - 800mm



Code	£ ea	d x DN	SDR up to	L	B	H	H1	D	D1	Dp	d1	t	s	Holes	W	Box Qty
495904400080T	606.38	250-400 x 80	17	300	305	115	102	16	200	160	138	20	18	8	2930	5
495904400100T	725.45	250-400 x 100	17	300	305	121	109	16	220	180	158	22	18	8	3525	4
495904400150T	1,432.15	280-400 x 150	17	300	305	132	119	16	285	240	212	24	18	8	6330	4
495904710080T	639.45	450-800 x 80	26	300	315	117	105	16	200	160	138	20	18	8	2910	5
495904710100T	766.24	450-800 x 100	26	300	315	123	110	16	220	180	158	22	18	8	3530	4
495904710150T	1,626.19	450-800 x 150	26	300	315	132	121	16	285	24	212	24	18	8	6300	4



XL and XXL Branch Saddles

PLASSON's Large Diameter Branch Saddles are available as Spigot and Flanged branch versions, in the size range shown below. These Branch Saddles are reliable, quick to fit and maintain the pressure rating of the main. Easy to use but effective. Tooling required to fit these saddles is available to purchase or to hire from our hire partners.

For more details on these products, please contact your Area Sales Manager or the PLASSON office.



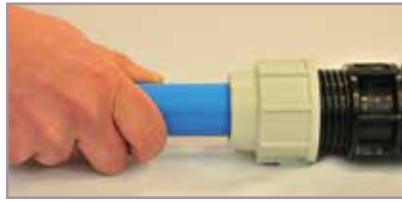
Mains size	Branch Outlet	Flange Outlet	PN Rating	PN Rating Gas
400mm	180	150	PN16	PE100 SDR11
	200	200		
	225	200		
	250	250		
450mm	180	150	PN16	PE100 SDR11
	200	200		
	225	200		
	250	250		
	315	300		
500mm	180	150	PN16	PE100 SDR11
	200	200		
	225	200		
	250	250		
560mm	180	150	PN16	PE100 SDR11
	200	200		
	225	200		
	250	250		
	315	300		
	400	400		
630mm	180	150	PN16	PE100 SDR11
	200	200		
	225	200		
	250	250		
	315	300		
710mm	180	150	PN16	PE100 SDR11
	200	200		
	225	200		
	250	250		
	315	300		
	400	400		
800mm	180	150	PN16	PE100 SDR11
	200	200		
	225	200		
	250	250		
	315	300		
900mm	180	150	PN10	PE100 SDR17
	200	200		
	225	200		
	250	250		
	315	300		
	400	400		



Metric Fittings 20mm - 110mm and Imperial Fittings 1/2" - 2"



Insert liner into pipe (metric 20mm-63mm only) and slacken nut until half the thread is visible.



Push pipe into body, through the nut, split ring, and 'O' ring.



Tighten nut firmly: Hand tight on pipe 20mm (3/4") - 32mm (1"), on pipe 40mm (1 1/4") and above use a PLASSON wrench.

Note: For diameters 40mm and above, chamfering and lubrication of the pipe will ease insertion (use silicon lubricant). Metric fitting shown for illustrative purposes. Imperial fittings have black nuts.

Metric Fittings - 125mm



Draw the nut, collars, and 'O' ring over the end of the pipe to a distance of approx. 250mm (put the white split ring to one side for later use).



Insert the pipe into the body of the fitting until it meets the interior stop. Then draw the 'O' ring and collars close to the body of the fitting.



Tighten the nut with a PLASSON wrench until the 'O' ring and collars enter the fitting and reach their end position. Unscrew nut from fitting.



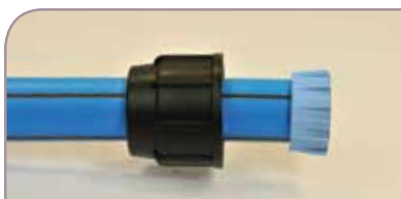
Open the white split ring and mount onto pipe with larger side against the collar ensuring that both parts meet the body of the fitting. Screw the nut tightly onto the fitting using a PLASSON wrench.

Metric Fittings - 160mm

- Undo and take out nuts & bolts.
- Take the two shell halves apart, remove the exposed sleeve & 'O' ring and place over the pipe end.
- Push the body of the fitting completely home over the pipe end.
- Place the two shell halves with grip rings over the pipe & fitting body.
- Insert bolts, washers, and nuts and tighten until the shells are in contact with each other.



PlasShield Adaptor



Remove nut and grip ring from fitting and discard grey nut. Mount black nut onto the pipe and assemble grip ring flush with the pipe end (discard white grip ring and use grey grip ring if provided).



Push the barbed end of the adaptor into the pipe until it meets the stop. Then push the plain end of the adaptor into the fitting until it meets the stop.



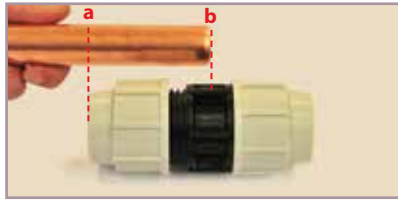
Screw nut tightly towards the body of the fitting using a PLASSON wrench.

When used in buried applications, it may be necessary to wrap the fitting with aluminium foil tape & petrolatum tape or waterproof tape as required by your local water utility company.

Copper Adaptor Set table X and Y (7438)



Remove nut from fitting and discard white split ring (except 35, 42, and 54mm copper, where the white split ring is used as a spacer). Push black rubber seal into fitting body and assemble components in the order shown above.



Place nut onto fitting leaving half the thread visible. Cut the copper pipe square and remove all burrs and sharp edges. Mark pipe at "a" when the pipe end reaches the centre of the body of the fitting, as shown by "b" above.



Push and twist the pipe through the nut, adaptor and metal ring into the body of the fitting, until the mark is in line with the end of the nut as shown. Tighten the nut with a PLASSON wrench.

Note: Lubrication of the pipe end will ease insertion (use silicon lubricant).

Imperial & Irish Pipe Adaptor (7786 / 7787 / 7788 / 7789 / 7995 / 7996)



Remove nut from fitting and discard white split ring (unless using 1 1/2" pipe). Mount nut on pipe and assemble red split ring flush with the pipe end (reuse white split ring for 1 1/2" pipe).



Push the barbed end of the adaptor into the pipe until it meets the stop. Then push the plain end of the adaptor into the fitting until it meets the stop.



Screw nut tightly towards the body of the fitting. Use a PLASSON wrench for 1" pipe and above.

Universal Pipe Adaptor (7896/7898)



Prepare pipe by ensuring that the end is free from grease and roughen outer surface with wire wool or similar. Remove nut from end of fitting and mount onto pipe, discard white split ring.



Push adaptor into fitting to the stop. Also push and twist the pipe into the fitting until it meets the internal stop.



Screw the nut tightly towards the body of the fitting. Final tightening with a PLASSON wrench is essential. **The installations MUST be anchored against end loading.**

Lead Adaptor (7782)



Remove nut from fitting and discard white split ring. Mount nut onto pipe followed by brown split ring and seal ring.



These components should be positioned 20mm from the pipe end.



Push pipe into the body of the fitting and tighten firmly with a PLASSON wrench (it is important that the pipe is NOT pushed fully up to the stop inside the fitting).

Note: This product seals on the outside of the pipe and it is therefore important that the external part of the pipe (where the seal is made) is in good condition. If external pipe is of poor quality it may be preferable to use the Plass4 Universal fitting.

Slide N' Seal Universal Slip Coupler



1. Mark pipe insertion depth. (approximately half the fitting length). Undo nuts 1 to 2 turns while ensuring they remain on the fitting.

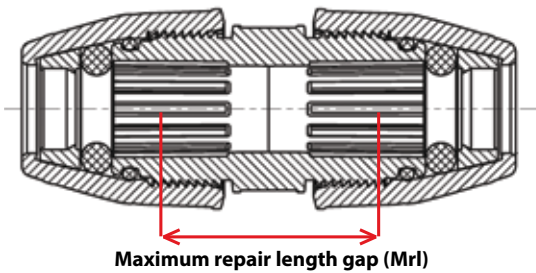


2. Insert each pipe to the marking.



3. Tighten each nut firmly with a Plasson wrench while holding the body with another wrench. The threads should no longer be visible.

Repair Lengths (Mrl)



d (popular pipes)	Mrl	L
24-28 (25mm, 3/4")	90mm	200
31-35 (32mm, 1")	100mm	210
40-43 (40mm, 1 1/4")	110mm	250
48-51 (50mm, 1 1/2")	120mm	270
60-64 (63mm, 2")	130mm	310

Pushfit Universal



Prepare the pipe by removing any unsound material adhering to the pipe then cut and de-burr pipe as necessary.

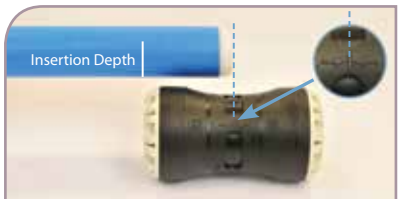


Push the pipe into the fitting up to the internal stop.

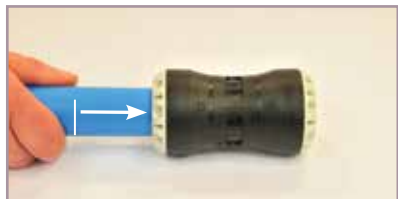


Tighten firmly using a PLASSON wrench or similar.

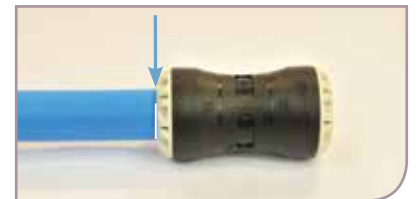
Pushfit assembly



Insert liner into pipe then measure and mark correct insertion depth against fitting as shown.



Push pipe into fitting up to the mark ensuring the pipe has been pushed passed the internal 'O' ring.



Make sure the mark on the pipe is inline with the end of the fitting.

Note: For assembly of Cu/PB/PEX, follow instructions above but ensure pipe manufacturers liner is fitted where applicable as per their instructions.

Pushfit disassembly



Using the Pushfit wrench, turn the nut anticlockwise to release pipe from fitting.



If the fitting is to be reused, the split ring, grip ring, and nut **MUST** be inserted in the order shown.



The metal grip ring in the Cu/PB/PEX fittings **MUST** be replaced if the fitting is reused. Reassemble in the order shown.

Plas4 Universal Fittings



Prepare the pipe by removing any unsound material adhering to the pipe then cut and de-burr pipe as necessary.



Slide the universal end of the fitting onto the pipe end until it reaches the internal fins and a resistant point is felt. **NOTE: DO NOT** force pipe end past the internal fins as this may impair joint.



Tighten the black nut using a PLASSON wrench or similar. Assemble the Metric PE joint as per the standard fitting instructions.

Note: If reusing the fitting, ensure the metal teeth are located in the grip ring, and the pipe end does not pass the location of the internal fins.

Self Tapping Swivel Tee

- Insert the bolts through the lower part of the saddle and lock them in position using the restraining clip.
- Place the lower part of the saddle on the underside of the pipe and place the upper part onto the bolts. Ensure that the EPDM seal is positioned correctly in the groove.
- Rotate the outlet to its desired position, hold and tighten the retaining nut until the outlet is locked in place. **DO NOT over tighten.**
- Connect the service pipe to the outlet following the standard mechanical PLASSON fitting instructions.
- Remove the cap and screw the cutter (using the tapper assembly tool) clockwise into the main. **NOTE:** When the main is penetrated a reduction in torque is felt followed by an increase in torque as the lower stop is met. **DO NOT continue to screw after this point.**
- Unscrew the cutter anticlockwise back to the upper stop. This will release the flow of water into the service pipe. Replace the cap.



Note: The cutter can be used in future to close the water supply by screwing it back into the main.

electrofusion

For EF joints ensure clean, dry working conditions and prepare pipe with appropriate tools to ensure removal of 0.2mm of surface of the pipe in the weld area.

For full jointing instructions please visit our [website: plasson.co.uk](http://www.plasson.co.uk) or contact sales office, [email: sales@plasson.co.uk](mailto:sales@plasson.co.uk) | [Tel: 01444 244446](tel:01444244446)



General note for all installations:

Before installation of all fittings, ensure that the end of the pipe to be inserted into the fitting is free of scratches and other imperfections and that both the pipe and the fitting itself are free of sand, mud, stones, etc. Where applicable ensure that split ring and grip ring teeth are sharp and bite into the pipe, to avoid pullouts if fittings are reused. If uncertain, replace the split ring and grip ring. Do not over tighten nuts when closing. Do not use wrenches or spanners with handle lengths longer than 46 cm. Alternatively replace split ring and grip ring where applicable. On MI and FI fittings and on PLASSON threaded fittings use PTFE to seal the thread. Do not use thread seal pastes.

Mechanical and pushfit fittings

Materials: Mechanical & pushfit fittings

Body: Polypropylene, high grade copolymer

Nut: High Grade Polypropylene

Split Ring and Grip Ring: Acetal (POM)

Liner: Acetal (POM)

Seal: Nitrile rubber (NBR)

Reinforcing Ring: Stainless steel on all female offtakes from 1¼" up to 4"

Threaded Fittings

Body: Polypropylene, high grade copolymer. Reinforcing Ring: Stainless steel. Brass Threads: CW617

Flanges

Flange dimensions in accordance with: BS 4504: 1989

All PLASSON products – MI and FI Threads

All threads conform to ISO - 7/1, BS 21, DIN 2999, NEN 3258, AS 1722 Part 1.

All external (male) threads are tapered. All internal (female) threads ≤ 3" are parallel. (unless stated)

Operating Temperatures

The fittings are not to be used with hot water, although they withstand the same temperature as the polyethylene pipe itself. The fittings and valves will withstand sub-zero temperatures.

Chemical Resistance

PLASSON fittings are supplied, as standard, with polyacetal split and grip rings and NBR seals which are suitable for water. For aggressive chemical applications CPVC split rings and EPDM or FPM 'O' rings can be supplied to produce a better chemical resistance.

Operating Pressures & Quality Certificates

PLASSON mechanical and pushfit fittings are tested and approved according to ISO 17885. For detailed pressure classification see table below. For WRAS approvals, please visit <http://www.wras.co.uk/directory/>

Product Code	Body Type	Pressure Rating	Stainless Steel Reinforcing Ring	From Pipe Diameter	To Pipe Diameter	From Thread	To Thread	From Outlet Size	To Outlet Size
Mechanical & Pushfit									
All Fittings	All Fitting Types	16.0							
Exception:									
Starts with 17	All 160mm Fittings	10.0							
Starts with 7 & 87	All Fittings with 3" Female Thread	10.0							
Starts with 7 & 87	All Fittings with 4" Thread	6.0							
77017	Plas4 (Universal)	10.0		50	50			35	50
7045	Slip Tee	12.5		40	63				
7120	End Plug	12.5		20	63				
7220	Compression Flange Adaptor	12.5		125	125				
7250	Threaded Adaptor	12.5		75	75	1 1/2"	3"		
7640/87640	45° Tee	8.0		63	110				
Saddles									
16076	Saddle Single Outlet	12.5	YES	20	63	1/2"	1 1/2"		
16076	Saddle Single Outlet	12.5	YES	75	180	1/2"	3/4"		
16076	Saddle Single Outlet	10.0	YES	75	180	1"	2"		
16076	Saddle Single Outlet	16.0	YES	40	180	1"	1"		
16176	Saddle Double Outlet	12.5	YES	20	63	1/2"	1 1/2"		
16176	Saddle Double Outlet	10.0	YES	75	180	1"	2"		
16540	Tapping Saddle	16.0							
Valves									
3047/3048	Angle Seat Valve	8.0							
3405	Threaded Stoptap	10.0				3/4"	1"		
3407	Stoptap	16.0		20	32				
3703	Mains Stop Valve	16.0				3/4"	2"		
PLASSON Threaded									
All Fittings	All Fitting Types	16.0							
Exception:									
Starts with 5	All Fitting Types	10.0				3/8"	3/8"		
5017	Threaded Socket	10.0				3"	3"		
5067	Threaded Nipple	10.0				3"	3"		

Electrofusion Fittings

Fitting Pressure Rating and Pipe Compatibility

PLASSON Fittings weld to PE80, PE100, PE100-RC and PEX-A pipes. Check that the pipe SDR is compatible with the PLASSON fittings. The range of compatible pipe SDR's for each specific fitting is defined on the fitting barcode label. For questions regarding general pipe SDR compatibility refer to PLASSON literature or contact your local PLASSON representative.

The following is a general guideline for PLASSON EF product pipe. SDR compatibility (in any case of discrepancy between the figure below and the figure on the barcode label, always refer to the barcode data).

Material

All PLASSON Electrofusion fittings are produced from material class PE100 which conform to international standards for potable water and natural or suitable manufactured gas systems.

Standards

PLASSON Electrofusion fittings are designed, tested and quality controlled according to PLASSON's internal standards. These standards are based on the following international standards:

EN 1555

EN 12201

NF 136

AS/NZS 4129

WRAS

DWi

PLASSON's Electrofusion Fittings:

- PN 16 (Water)
- PE100 SDR11 (Gas)
- Up to 75mm (inclusive) are Weldable to Pipes SDR \leq 11
- Elbows and Tees of main diameter 40mm-75mm \leq 17
- 90mm & Up are Weldable to Pipes SDR \leq 17
- 63-75mm Tapping Saddles and Valves are suitable for SDR11

Note: for tapping SDR \leq 11 pipes (size 63 and up), please consult your PLASSON representative.

LightFit:

- PN 10 (Water)
- PE100 SDR17 (Gas)
- 40mm - 75mm are Weldable to Pipes SDR \leq 17
- 90mm are Weldable to Pipes SDR \leq 26
- 110mm - 800mm are Weldable to Pipes SDR \leq 33

Measure the pipe external diameter toward the pipe end using a Pi tape. The pipe external diameter must be within the tolerances defined in International standards such as ISO 4437-2, AS/NZS, 4130, EN 1555-2 and EN 12201-2.

Electrofusion, welding and cooling times are specified on the individual products. Welding times can also be recognised by appropriately equipped control boxes through the red pin connector or barcode.

Pin Size: 4.0mm (Unless stated).

Voltage: 40V (800mm & 900mm 42v).

Control box current capacity: <400mm 60/80amp / >400mm 80/110amp

Generators must be suitable for current load and be equipped with an automatic voltage regulator.

PLASSON specialist tooling

PLASSON's range of electrofusion tooling is designed and manufactured by our joint venture partner, PFS. Founded in 1997 in Germany, PFS quickly developed into one of the world's leading manufacturers of plastic welding technologies for pipeline construction. The product range includes a wide variety of electrofusion control units, butt fusion machines, extensive accessories and a complete portfolio of tools for the preparation of plastic pipes for welding.

Thousands of customers around the globe rely on the high quality of PFS products. Product development is conducted by employees with many years experience, know-how, dedication and with a high capacity to innovate.

Close cooperation with end users of PFS products and systems provides real field feedback to allow refinement of products, even at component level, resulting in products robust enough to handle even the most difficult site conditions.

For more information and our online catalogue please visit:
www.pfs-gmbh.com



Abbreviations used on the product description pages of this catalogue:

A, A1	Height of shroud from centerline	L, L1, L2	Length
d, d1	Nominal diameter of fitting or outlet	n	Number of bolt holes in flanges
D, D1	Diameter	S	Diameter of bolt holes in flanges
DN	Nominal bore corresponding approximately to the inside diameter of the pipe	t	Thickness of metal flange
Dp	Pitch circle diameter of bolt holes in flanges	W	Weight in grams
G, R, Rp	Threaded outlet diameter	UC	Units per carton
H	Height		

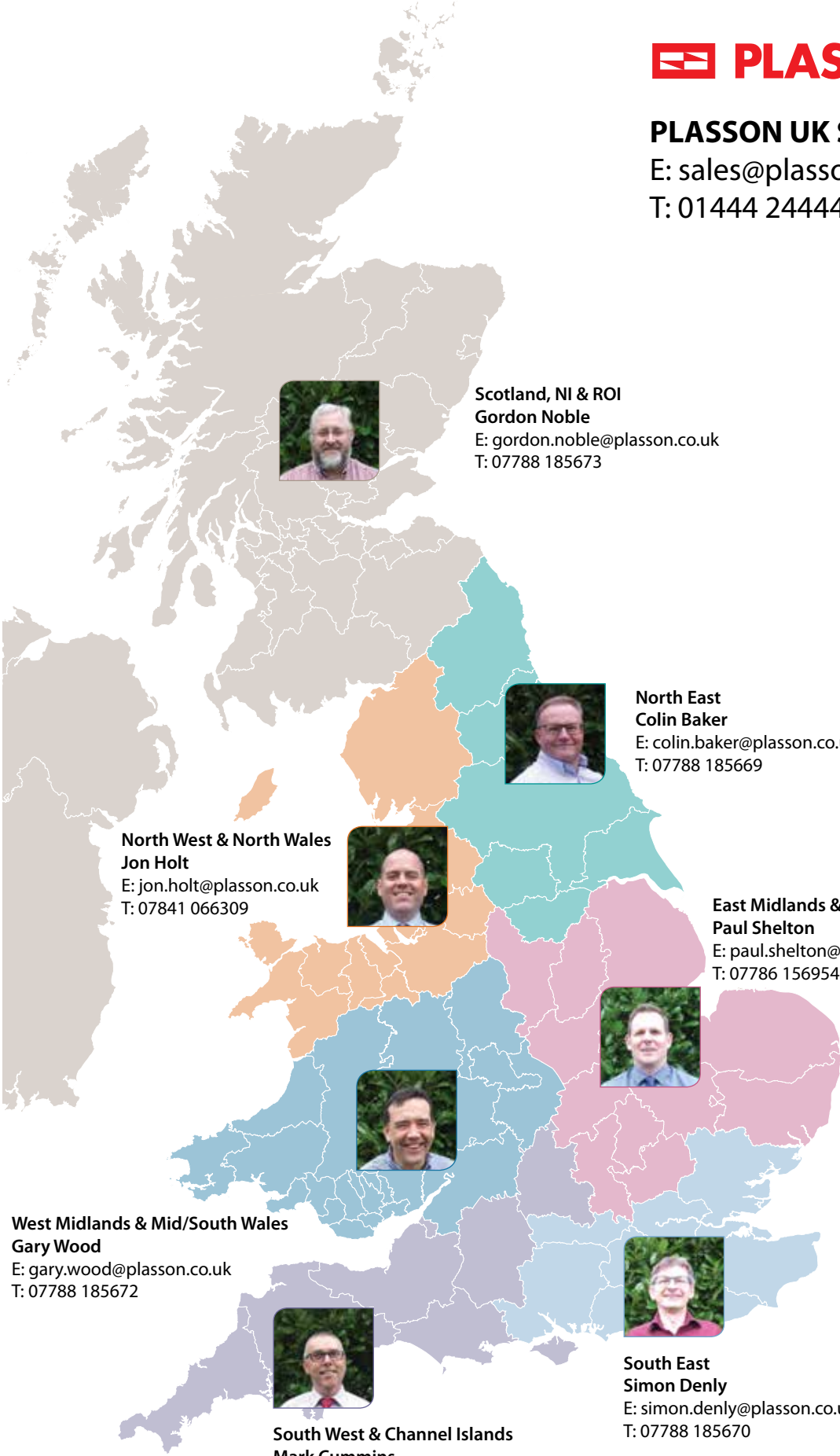
Whereas the products shown in this catalogue illustrate and describe the current state of their development, PLASSON reserves the right at all times to make such technical alterations as it shall see fit to its products. Although every care has been taken in the preparation of the information, specifications and other data included in this catalogue, we cannot rule out inadvertent errors or omissions. Purchasers should take into account possible deviations or variations which will not substantially diminish the functionality or performance of the products, and, in many cases, are designed to improve the same.

PLASSON® is the Registered Trademark of Plasson Ltd. or Plasson Maagan Michael Industries Ltd. PLASSON's products are protected by patents, trademark, design and copyright laws. Plasson UK Ltd Terms & Conditions apply to the exclusion of all other terms. A copy can be found on our website: www.plasson.co.uk



PLASSON UK Sales Office

E: sales@plasson.co.uk
T: 01444 244446



Scotland, NI & ROI
Gordon Noble
E: gordon.noble@plasson.co.uk
T: 07788 185673



North East
Colin Baker
E: colin.baker@plasson.co.uk
T: 07788 185669



North West & North Wales
Jon Holt
E: jon.holt@plasson.co.uk
T: 07841 066309



East Midlands & East Anglia
Paul Shelton
E: paul.shelton@plasson.co.uk
T: 07786 156954



West Midlands & Mid/South Wales
Gary Wood
E: gary.wood@plasson.co.uk
T: 07788 185672



South East
Simon Denly
E: simon.denly@plasson.co.uk
T: 07788 185670



South West & Channel Islands
Mark Cummins
E: mark.cummins@plasson.co.uk
T: 07788 185671



Technical Manager
Duncan Fisher
E: duncan.fisher@plasson.co.uk
T: 07788 185674



PLASSON[®]

Tel: 01444 244446
Web: plasson.co.uk
Email: sales@plasson.co.uk